



Multiple Sewershed Package 14 – Open Cut and Pipe Bursting
Solicitation No.: CO-00365
Job No.: 19-4545

ADDENDUM 4
October 19, 2020

To Bidder of Record:

This addendum, applicable to work referenced above, is an amendment to the bid proposal, plans and specifications and as such will be a part of and included in the Contract Documents. Acknowledge receipt of this addendum by entering the Addendum number and issue date on the space provided in submitted copies of the bid proposal.

CHANGES TO THE SPECIFICATIONS

1. Bid Proposal, pages BP-1 to BP-3 – Remove in its entirety and replace with the revised version attached to this addendum. Respondents will utilize the attached Bid Proposal form in their submittals. Failure to use the revised bid proposal may result in the contractor’s bid being found non-responsive and rejected.
2. Building Wage Decision document (rev. 08/28/2020, General Decision Number: TX20200231) - Remove and replace in its entirety with the revised version (rev. 9/11/2020, General Decision Number: TX20200231) attached to this addendum. This version should be utilized by the awarded contractor for the project.
3. In the Contract Agreement, page CA-1, paragraph five (5), remove “or until funds are exhausted, whichever comes first (delete if not applicable)”.
4. In the Supplemental Conditions, Page SS-2, #24, remove items “(h)”, “(i)”, and “(j)” from the list of required items to be submitted from the apparent low bidder within one (1) day of the bid opening.
5. Special Conditions, Pages SC-1 to SC-5 – Remove and replace in its entirety with the revised version attached to this addendum.
6. In the Special Provisions to Technical Specifications, add the following section after Section G.:
 - H. Revisions to Special Specification 6001 Portable Changeable Message Sign

6001 4. Measurement: Delete this section in its entirety and Replace with the following:

Portable Changeable Message Signs shown in the plans shall be measured separately per each unit requested by Inspector.

All other language in this Specification 6001 remains in full force.”
7. Add the attached Special Specification 6001, Portable Changeable Message Sign, Pages 1 to 2, to the Specifications.
8. Special Specification 2050, Structure (Shed) Relocation and Deck Adjustment, Pages 2050-1 to 2050-5 – Remove in its entirety.
9. Special Specification 2051, Concrete Foundation Removal, Pages 2051-1 to 2051-2 – Remove in its entirety.

CHANGES TO THE PLANS

1. Remove the following sheets dated 9/21/2020 and replace with the attached sheets dated 10/15/2020:
 - Sheet 2- Index of Drawings
 - Sheet 5- Summary of Quantities
 - Sheet 7- Work Zone Area 1 (1 of 3)
 - Sheet 10- Horizontal and Vertical Control (1 of 2)
 - Sheet 12- Site 1 Compkey 997931 Plan and Profile
 - Sheet 15- Compkey 997698 & 998658 STA 1+00 to STA 5+00 (1 of 2)
 - Sheet 16- Site 2- Compkey 997698 & 998658 STA 5+00 to STA 6+98 (2 of 2)
 - Sheet 19- Site 4- Compkey 1000191 STA 1+00 to STA 3+41
 - Sheet 20- Sites 2 & 3- Compkeys 998986, 997698, & 998658 Suggested Bypass Plan
 - Sheet 21- Sites 2 & 3- Compkeys 998986, 997698, & 998658 Traffic Control Plan
 - Sheet 22- Site 5- Compkey 1015599 Plan and Profile
 - Sheet 34- Site 7- Compkeys 1051654 STA 3+00 to STA 4+13.06 (2 of 2)

CLARIFICATIONS

1. Site 4 has been removed from the project. As a result, a revised version of the Special Conditions has been provided and Special Specifications 2050 and 2051 have been removed.
2. Sheets 2, 7, 10, 19, 20, and 21 were revised to indicate the removal of Site 4 from the project.
3. The following updates have been made to the Summary of Quantities on Sheet 5:
 - a. Quantity for Bid Item 103.1 Remove Concrete Curb has been **adjusted**.
 - b. Quantity for Bid Item 103.3 Remove Concrete Sidewalks and Driveways has been **adjusted**.
 - c. Quantity for Bid Item 502.1 Concrete Sidewalk has been **adjusted**.
 - d. Quantity for Bid Item 503.1 Portland Cement Concrete Driveway has been **adjusted**.
 - e. Bid Item 507.5 Chain Link Wire Fence (Vehicular Gates - 8-foot width) has been **added**.
 - f. Quantity for Bid Item 515.1 Topsoil (4" Depth) has been **adjusted**.
 - g. Quantity for Bid Item 516.1 Bermuda Sodding has been **adjusted**.
 - h. Quantity for Bid Item 516.2 St. Augustine Sodding has been **adjusted**.
 - i. Bid Item 530.1 Barricades, Signs, and Traffic Handling (Sites 2, 3, & 4 – Hall Park) has been **removed**.
 - j. Bid Item 530.1 Barricades, Signs, and Traffic Handling (Sites 2 & 3 – Hall Park) has been **added**.
 - k. Bid Item 864-S1 Bypass Pumping (Sites 2, 3, & 4 Hall Park – 8") has been **removed**.
 - l. Bid Item 864-S1 Bypass Pumping (Sites 2 & 3 Hall Park – 8") has been **added**.
 - m. Quantity for Bid Item 550 Trench Excavation Safety Protection has been **adjusted**.
 - n. Quantity for Bid Item 848 8" PVC Sanitary Sewer Pipe (SDR 26) (All Depths) has been **adjusted**.
 - o. Quantity for Bid Item 852.1 Sanitary Sewer Manhole (4' Dia) (0'-6' Depth) has been **adjusted**.
 - p. Quantity for Bid Item 852.3 Extra Depth Manhole (>6') has been **adjusted**.
 - q. Quantity for Bid Item 854 6" PVC Sanitary Sewer Lateral Pipe (SDR 26) (All Depths) has been **adjusted**.
 - r. Quantity for Bid Item 854 Two-Way Sanitary Sewer Clean-out has been **adjusted**.
 - s. Quantity for Bid Item 866 Sewer Main Television Inspection (Pre-Construction) (8" - 15" Dia.) has been **adjusted**.
 - t. Quantity for Bid Item 866 Sewer Main Television Inspection (Post-Construction) (8" - 15" Dia.) has been **adjusted**.
 - u. Quantity of Bid Item 6001 Portable Changeable Message Sign has been **adjusted** and payment unit has been **changed** from Lump Sum to Each.
 - v. Bid Item 2050 Structure (Shed) Relocation and Deck Adjustment (Site 4 - 4419 Hall Park) has been **removed**.
 - w. Bid Item 2051 Concrete Foundation Removal (Site 4 - 4421 Hall Park) has been **removed**.
 - x. Bid Item SS 2010 Removal & Replacement of Fences (All Types, Sizes) (Site 4 - Hall Park) has been **removed**.
4. Sheet 12 was revised to add Bid Item 6001 Portable Changeable Message Sign.

5. The following updates have been made to Sheet 15:
 - a. Revision of Key Note #7
 - b. Addition of Key Notes #10, 11, & 12
 - c. Addition of a call out to replace SSMH #47624
 - d. Updates to the Summary of Quantities:
 - i. Bid Item 103.1 Remove Concrete Curb has been **added**.
 - ii. Bid Item 103.3 Remove Concrete Sidewalks and Driveways has been **added**.
 - iii. Bid Item 502.1 Concrete Sidewalk has been **added**.
 - iv. Bid Item 503.1 Portland Cement Concrete Driveway has been **added**.
 - v. Bid Item 507.5 Chain Link Wire Fence(Vehicular Gates - 8-foot width) has been **added**.
 - vi. Bid Item 515.1 Topsoil (4" Depth) has been **adjusted**.
 - vii. Bid Item 516.2 St. Augustine Sodding has been **adjusted**.
 - viii. Bid Item 530.1 Barricades, Signs, and Traffic Handling (Sites 2 & 3 – Hall Park) has been **added**.
 - ix. Bid Item 852.1 Sanitary Sewer Manhole (4' Dia) (0'-6' Depth) has been **adjusted**.
 - x. Bid Item 864-S1 Bypass Pumping (Sites 2 & 3 Hall Park - 8") has been **added**.

6. The following updates have been made to Sheet 16:
 - a. Addition of Sheet Note #3
 - b. Revision of Key Note #5

7. Sheet 34 was revised to update Tree Table.

8. Sheet 22 was revised to update quantity and the payment unit of Bid Item 6001 Portable Changeable Message Sign.

9. The estimated construction cost has decreased from \$1,247,524.41 to \$1,054,000.00.

END OF ADDENDUM

This Addendum, including these three (3) pages, is thirty-two (32) pages with attachments in its entirety. Attachments:

- Bid Proposal (3 pages total)
- Building Wage Decision (rev. 9/11/2020, General Decision Number: TX20200231) (7 pages total)
- Special Conditions (5 pages total)
- Special Specification 6001 (2 pages total)
- Sheet 2, 5, 7, 10, 12, 15, 16, 19, 20, 21, 22 & 34 (12 pages total)

 Javier Garcia, P.E.
 Garcia Infrastructure Consultants, LLC



10/19/2020

BID PROPOSAL

PROPOSAL OF _____, a corporation
a partnership consisting of _____
an individual doing business as _____

THE SAN ANTONIO WATER SYSTEM:

Pursuant to Instructions and Invitation to Bidders, the undersigned proposes to furnish all labor and materials as specified and perform the work required for the project as specified, in accordance with the Plans and Specifications for the following prices in the bid proposal to wit:

PLEASE SEE ATTACHED LIST OF BID ITEMS.

BIDDER'S SIGNATURE & TITLE

FIRM'S NAME (TYPE OR PRINT)

FIRM'S ADDRESS

FIRM'S PHONE NO. /FAX NO.

FIRM'S EMAIL ADDRESS

The Contractor herein acknowledges receipt of the following:
Addendum Nos. _____

OWNER RESERVES THE RIGHT TO ACCEPT THE OVERALL MOST RESPONSIBLE BID.

The bidder offers to construct the Project in accordance with the Contract Documents for the contract price, and to complete the Project within **270** calendar days after the start date, as set forth in the Authorization to Proceed. **The bidder understands and accepts the provisions of the contract Documents relating to liquidated damages of the project if not completed on time.**

Complete the additional requirements of the Bid Proposal which are included on the following pages.

Statement on President's Executive Orders

Has your firm previously performed work subject to the President's Executive Orders Numbers 11246 and 11375 or any preceding similar executive orders (Numbers 10925 and 11114)?

Yes No

Solicitation No. CO-00365
 SAWS Job No. 19-4545
 Multiple Sewershed Package 14 - Open Cut and Pipe-Bursting

ITEM NO	SPEC NO	DESCRIPTION	UNIT	ESTIMATED QUANTITY	UNIT PRICE	AMOUNT
1	103.1	Remove Concrete Curb	LF	77	\$	\$
2	103.3	Remove Concrete Sidewalks and Driveways	SF	1384	\$	\$
3	203.1	Prime Coat	GAL	74	\$	\$
4	203.2	Tack Coat	GAL	24	\$	\$
5	205.3	HMAC, Type 'C' (3" Comp. Depth) (Collector/Arterial)	SY	246	\$	\$
6	205.4	HMAC, Type 'D' (2" Comp. Depth) (Local/Resid. Streets)	SY	130	\$	\$
7	206.1	Asphalt Treated Base (10" Comp. Depth)	SY	372	\$	\$
8	413.1	Flowable Fill	CY	30	\$	\$
9	500.1	Concrete Curb	LF	69	\$	\$
10	502.1	Concrete Sidewalk	SY	22	\$	\$
11	503.1	Portland Cement Concrete Driveway	SY	137	\$	\$
12	503.4	Asphaltic Concrete Driveway	SY	21	\$	\$
13	507.5	Chain Link Wire Fence (Vehicular Gate - 8-foot width)	EA	2	\$	\$
14	515.1	Topsoil (4" Depth)	CY	391	\$	\$
15	516.1	Bermuda Sodding	SY	2814	\$	\$
16	516.2	St. Augustine Sodding	SY	733	\$	\$
17	520.1	Hydromulching	SY	514	\$	\$
18	530.1	Barricades, Signs, and Traffic Handling (Site 1 - La Sabre)	LS	1	\$	\$
19	530.1	Barricades, Signs, and Traffic Handling (Sites 2 & 3 - Hall Park)	LS	1	\$	\$
20	530.1	Barricades, Signs, and Traffic Handling (Site 5 - Commerce)	LS	1	\$	\$
21	530.1	Barricades, Signs, and Traffic Handling (Site 6 - Darwin)	LS	1	\$	\$
22	530.1	Barricades, Signs, and Traffic Handling (Site 7 - Gillette)	LS	1	\$	\$
23	530.1	Barricades, Signs, and Traffic Handling (Site 8 - Oletha)	LS	1	\$	\$
24	535.1	4-inch Wide Yellow Line	LF	20	\$	\$
25	535.2	4-inch Wide White Line	LF	10	\$	\$
26	535.9	Left White Arrow	EA	1	\$	\$
27	550	Trench Excavation Safety Protection	LF	2002	\$	\$
28	848	8" PVC Sanitary Sewer Pipe (SDR 26) (All Depths)	LF	1975	\$	\$
29	852.1	Sanitary Sewer Manhole (4' Dia.) (0'-6' Depth)	EA	12	\$	\$
30	852.2	Sanitary Sewer Drop Manhole (4' Dia.) (0'-6' Depth)	EA	3	\$	\$
31	852.3	Extra Depth Manhole (>6')	VF	25	\$	\$
32	854	6" PVC Sanitary Sewer Lateral Pipe (SDR 26) (All Depths)	LF	1511	\$	\$
33	854	Two-Way Sanitary Sewer Clean-out	EA	76	\$	\$
34	855	Reconstruction of Existing Manhole	EA	1	\$	\$
35	858	Concrete Encasement, Cradles, Saddles, and Collars	CY	21	\$	\$

Solicitation No. CO-00365
 SAWS Job No. 19-4545
 Multiple Sewershed Package 14 - Open Cut and Pipe-Bursting

ITEM NO	SPEC NO	DESCRIPTION	UNIT	ESTIMATED QUANTITY	UNIT PRICE	AMOUNT
36	864-S1	Bypass Pumping (Site 1 - La Sabre - 8")	LS	1	\$	\$
37	864-S1	Bypass Pumping (Sites 2 & 3 Hall Park - 8")	LS	1	\$	\$
38	864-S1	Bypass Pumping (Site 5 - Commerce - 8")	LS	1	\$	\$
39	864-S1	Bypass Pumping (Site 6 - Darwin - 8")	LS	1	\$	\$
40	864-S1	Bypass Pumping (Site 7 - Gillette - 8")	LS	1	\$	\$
41	864-S1	Bypass Pumping (Site 8 - Oletha - 8")	LS	1	\$	\$
42	866	Sewer Main Television Inspection (Pre-Construction) (8" - 15" Dia.)	LF	3444	\$	\$
43	866	Sewer Main Television Inspection (Post-Construction) (8" - 15" Dia.)	LF	1975	\$	\$
44	900	Pipe Burst 8" Sanitary Sewer Pipe (DR 13.5 160 PSI, All Depths)	LF	179	\$	\$
45	900	Pipe Burst 8" Sanitary Sewer Pipe (All Mat'l. Types, All Depths)	LF	1290	\$	\$
46	910	Manhole Rehabilitation (incl. New Ring/Cover & Encasement)	VF	44	\$	\$
47	1103.1	Point Repair, 8" Dia. (up to 9 LF) (0'-10' Depth)	EA	3	\$	\$
48	6001	Portable Changeable Message Sign (TxDOT Spec)	EA	4	\$	\$
49	SS 2010	Removal & Replacement of Fences (All Types, Sizes) (Site 2 - Hall Park)	LS	1	\$	\$
50	SS 2010	Removal & Replacement of Fences (All Types, Sizes) (Site 3 - Hall Park)	LS	1	\$	\$
51	SS 2010	Removal & Replacement of Fences (All Types, Sizes) (Site 7 - Gillette)	LS	1	\$	\$
SUBTOTAL (ITEMS 1-51)					\$	

52	100.1	Mobilization (Max 10% of Line Item 1 - 51)	LS	1	\$	\$
53	101.1	Preparing Right-of-Way (Max 5% of Line Item 1 - 51) (inclusive of Easements, Rights of Entry, etc.)	LS	1	\$	\$

Mobilization and Prep of ROW shall be limited to the maximum percentage shown. If the percentage exceeds the allowable maximum stated for mobilization and or preparation of ROW, SAWS reserves the right to cap the amount at percentages shown and adjust the extensions of the bid items accordingly.

TOTAL BID PRICE (TO INCLUDE LINE ITEMS 1-51 and 52-53)					\$	
---	--	--	--	--	----	--

"General Decision Number: TX20200231 09/11/2020

Superseded General Decision Number: TX20190231

State: Texas

Construction Type: Building

County: Bexar County in Texas.

BUILDING CONSTRUCTION PROJECTS (does not include single family homes or apartments up to and including 4 stories).

Note: Under Executive Order (EO) 13658, an hourly minimum wage of \$10.80 for calendar year 2020 applies to all contracts subject to the Davis-Bacon Act for which the contract is awarded (and any solicitation was issued) on or after January 1, 2015. If this contract is covered by the EO, the contractor must pay all workers in any classification listed on this wage determination at least \$10.80 per hour (or the applicable wage rate listed on this wage determination, if it is higher) for all hours spent performing on the contract in calendar year 2020. If this contract is covered by the EO and a classification considered necessary for performance of work on the contract does not appear on this wage determination, the contractor must pay workers in that classification at least the wage rate determined through the conformance process set forth in 29 CFR 5.5(a)(1)(ii) (or the EO minimum wage rate, if it is higher than the conformed wage rate). The EO minimum wage rate will be adjusted annually. Please note that this EO applies to the above-mentioned types of contracts entered into by the federal government that are subject to the Davis-Bacon Act itself, but it does not apply to contracts subject only to the Davis-Bacon Related Acts, including those set forth at 29 CFR 5.1(a)(2)-(60). Additional information on contractor requirements and worker protections under the EO is available at www.dol.gov/whd/govcontracts.

Modification Number	Publication Date
0	01/03/2020
1	02/14/2020
2	08/28/2020
3	09/11/2020

ASBE0087-014 01/01/2018

	Rates	Fringes
ASBESTOS WORKER/HEAT & FROST INSULATOR (Duct, Pipe and Mechanical System Insulation).....	\$ 22.72	10.02

BOIL0074-003 01/01/2017

	Rates	Fringes
BOILERMAKER.....	\$ 28.00	22.35

ELEC0060-003 06/01/2019

Rates	Fringes
-------	---------

ELECTRICIAN (Communication
Technician Only).....\$ 22.55 9%+5.45

ELEC0060-004 06/01/2019

Rates Fringes

ELECTRICIAN (Excludes Low
Voltage Wiring).....\$ 28.60 18%+5.45

ELEV0081-001 01/01/2020

Rates Fringes

ELEVATOR MECHANIC.....\$ 41.90 34.765

FOOTNOTES:

A. 6% under 5 years based on regular hourly rate for all hours worked. 8% over 5 years based on regular hourly rate for all hours worked.

B. Holidays: New Year's Day; Memorial Day; Independence Day; Labor Day; Thanksgiving Day; Friday after Thanksgiving Day; Christmas Day; and Veterans Day.

ENGI0450-002 04/01/2014

Rates Fringes

POWER EQUIPMENT OPERATOR
Cranes.....\$ 34.85 9.85

* IRON0066-013 06/01/2020

Rates Fringes

IRONWORKER, STRUCTURAL.....\$ 23.45 6.83

* IRON0084-011 06/01/2020

Rates Fringes

IRONWORKER, ORNAMENTAL.....\$ 25.26 7.13

PLUM0142-009 08/07/2019

Rates Fringes

HVAC MECHANIC (HVAC
Electrical Temperature
Control Installation Only).....\$ 30.25 13.36

HVAC MECHANIC (HVAC Unit
Installation Only).....\$ 30.25 13.36

PIPEFITTER (Including HVAC
Pipe Installation).....\$ 31.05 13.76
Including HVAC Pipe Installation

PLUMBER (Excludes HVAC Pipe
Installation).....\$ 31.05 13.76
Excludes HVAC Pipe Installation

SFTX0669-002 04/01/2020

	Rates	Fringes
SPRINKLER FITTER (Fire Sprinklers).....	\$ 30.64	21.68

SHEE0067-004 07/01/2020

	Rates	Fringes
Sheet metal worker Excludes HVAC Duct Installation.....	\$ 27.31	15.51
HVAC Duct Installation Only.	\$ 27.31	15.51

SUTX2014-006 07/21/2014

	Rates	Fringes
BRICKLAYER.....	\$ 22.15	0.00
CARPENTER (Acoustical Ceiling Installation Only).....	\$ 17.83	0.00
CARPENTER (Form Work Only).....	\$ 13.63	0.00
CARPENTER, Excludes Acoustical Ceiling Installation, Drywall Hanging, Form Work, and Metal Stud Installation.....	\$ 16.86	4.17
CAULKER.....	\$ 15.00	0.00
CEMENT MASON/CONCRETE FINISHER...	\$ 22.27	5.30
DRYWALL FINISHER/TAPER.....	\$ 13.81	0.00
DRYWALL HANGER AND METAL STUD INSTALLER.....	\$ 15.18	0.00
ELECTRICIAN (Low Voltage Wiring Only).....	\$ 20.39	3.04
IRONWORKER, REINFORCING.....	\$ 12.27	0.00
LABORER: Common or General.....	\$ 10.75	0.00
LABORER: Mason Tender - Brick...	\$ 11.88	0.00
LABORER: Mason Tender - Cement/Concrete.....	\$ 12.00	0.00
LABORER: Pipelayer.....	\$ 11.00	0.00
LABORER: Roof Tearoff.....	\$ 11.28	0.00
LABORER: Landscape and Irrigation.....	\$ 8.00	0.00
OPERATOR: Backhoe/Excavator/Trackhoe.....	\$ 15.98	0.00
OPERATOR: Bobcat/Skid		

Steer/Skid Loader.....	\$ 14.00	0.00
OPERATOR: Bulldozer.....	\$ 14.00	0.00
OPERATOR: Drill.....	\$ 14.50	0.00
OPERATOR: Forklift.....	\$ 12.50	0.00
OPERATOR: Grader/Blade.....	\$ 23.00	5.07
OPERATOR: Loader.....	\$ 12.79	0.00
OPERATOR: Mechanic.....	\$ 18.75	5.12
OPERATOR: Paver (Asphalt, Aggregate, and Concrete).....	\$ 16.03	0.00
OPERATOR: Roller.....	\$ 12.00	0.00
PAINTER (Brush, Roller and Spray), Excludes Drywall Finishing/Taping.....	\$ 13.07	0.00
ROOFER.....	\$ 12.00	0.00
TILE FINISHER.....	\$ 11.32	0.00
TILE SETTER.....	\$ 14.94	0.00
TRUCK DRIVER: Dump Truck.....	\$ 12.39	1.18
TRUCK DRIVER: Flatbed Truck.....	\$ 19.65	8.57
TRUCK DRIVER: Semi-Trailer Truck.....	\$ 12.50	0.00
TRUCK DRIVER: Water Truck.....	\$ 12.00	4.11

WELDERS - Receive rate prescribed for craft performing operation to which welding is incidental.

=====

Note: Executive Order (EO) 13706, Establishing Paid Sick Leave for Federal Contractors applies to all contracts subject to the Davis-Bacon Act for which the contract is awarded (and any solicitation was issued) on or after January 1, 2017. If this contract is covered by the EO, the contractor must provide employees with 1 hour of paid sick leave for every 30 hours they work, up to 56 hours of paid sick leave each year. Employees must be permitted to use paid sick leave for their own illness, injury or other health-related needs, including preventive care; to assist a family member (or person who is like family to the employee) who is ill, injured, or has other health-related needs, including preventive care; or for reasons resulting from, or to assist a family member (or person who is like family to the employee) who is a victim of, domestic violence, sexual assault, or stalking. Additional information on contractor requirements and worker protections under the EO is available at www.dol.gov/whd/govcontracts.

Unlisted classifications needed for work not included within

the scope of the classifications listed may be added after award only as provided in the labor standards contract clauses (29CFR 5.5 (a) (1) (ii)).

The body of each wage determination lists the classification and wage rates that have been found to be prevailing for the cited type(s) of construction in the area covered by the wage determination. The classifications are listed in alphabetical order of ""identifiers"" that indicate whether the particular rate is a union rate (current union negotiated rate for local), a survey rate (weighted average rate) or a union average rate (weighted union average rate).

Union Rate Identifiers

A four letter classification abbreviation identifier enclosed in dotted lines beginning with characters other than ""SU"" or ""UAVG"" denotes that the union classification and rate were prevailing for that classification in the survey. Example: PLUM0198-005 07/01/2014. PLUM is an abbreviation identifier of the union which prevailed in the survey for this classification, which in this example would be Plumbers. 0198 indicates the local union number or district council number where applicable, i.e., Plumbers Local 0198. The next number, 005 in the example, is an internal number used in processing the wage determination. 07/01/2014 is the effective date of the most current negotiated rate, which in this example is July 1, 2014.

Union prevailing wage rates are updated to reflect all rate changes in the collective bargaining agreement (CBA) governing this classification and rate.

Survey Rate Identifiers

Classifications listed under the ""SU"" identifier indicate that no one rate prevailed for this classification in the survey and the published rate is derived by computing a weighted average rate based on all the rates reported in the survey for that classification. As this weighted average rate includes all rates reported in the survey, it may include both union and non-union rates. Example: SULA2012-007 5/13/2014. SU indicates the rates are survey rates based on a weighted average calculation of rates and are not majority rates. LA indicates the State of Louisiana. 2012 is the year of survey on which these classifications and rates are based. The next number, 007 in the example, is an internal number used in producing the wage determination. 5/13/2014 indicates the survey completion date for the classifications and rates under that identifier.

Survey wage rates are not updated and remain in effect until a new survey is conducted.

Union Average Rate Identifiers

Classification(s) listed under the UAVG identifier indicate that no single majority rate prevailed for those classifications; however, 100% of the data reported for the classifications was union data. EXAMPLE: UAVG-OH-0010

08/29/2014. UAVG indicates that the rate is a weighted union average rate. OH indicates the state. The next number, 0010 in the example, is an internal number used in producing the wage determination. 08/29/2014 indicates the survey completion date for the classifications and rates under that identifier.

A UAVG rate will be updated once a year, usually in January of each year, to reflect a weighted average of the current negotiated/CBA rate of the union locals from which the rate is based.

WAGE DETERMINATION APPEALS PROCESS

1.) Has there been an initial decision in the matter? This can be:

- * an existing published wage determination
- * a survey underlying a wage determination
- * a Wage and Hour Division letter setting forth a position on a wage determination matter
- * a conformance (additional classification and rate) ruling

On survey related matters, initial contact, including requests for summaries of surveys, should be with the Wage and Hour Regional Office for the area in which the survey was conducted because those Regional Offices have responsibility for the Davis-Bacon survey program. If the response from this initial contact is not satisfactory, then the process described in 2.) and 3.) should be followed.

With regard to any other matter not yet ripe for the formal process described here, initial contact should be with the Branch of Construction Wage Determinations. Write to:

Branch of Construction Wage Determinations
Wage and Hour Division
U.S. Department of Labor
200 Constitution Avenue, N.W.
Washington, DC 20210

2.) If the answer to the question in 1.) is yes, then an interested party (those affected by the action) can request review and reconsideration from the Wage and Hour Administrator (See 29 CFR Part 1.8 and 29 CFR Part 7). Write to:

Wage and Hour Administrator
U.S. Department of Labor
200 Constitution Avenue, N.W.
Washington, DC 20210

The request should be accompanied by a full statement of the interested party's position and by any information (wage payment data, project description, area practice material, etc.) that the requestor considers relevant to the issue.

3.) If the decision of the Administrator is not favorable, an interested party may appeal directly to the Administrative Review Board (formerly the Wage Appeals Board). Write to:

Administrative Review Board
U.S. Department of Labor
200 Constitution Avenue, N.W.
Washington, DC 20210

4.) All decisions by the Administrative Review Board are final.

=====

END OF GENERAL DECISION"

Special Conditions

SCOPE OF WORK

The San Antonio Water System is soliciting Bids for the purpose of retaining a Contractor to perform the rehabilitation and replacement of approximately 1,975-LF of existing SAWS sanitary sewer pipeline facilities using an Open Cut and 1,469-LF using Pipe Bursting (PB). The work will also involve rehabilitation, repair, and/or upgrade of associated manhole structures, and reconnection of all lateral services. This project includes work on 12 pipe segments (compkeys) at 6 different project locations. A segment is defined as the sewer main between two adjacent manholes or between a manhole and the end of the line where there is not an existing manhole. All quantities are estimated in the proposal, and it is the intent of the proposal and quantities to establish a fixed unit price for various line items to be paid to the Contractor by SAWS during the term of this contract. No change in the unit price will be made, regardless of the actual quantity of the item of work performed during the term of the contract. Some of the work involved in the project may require, but is not limited to: traffic control, bypass pumping, sewer point repairs, manhole replacement and rehabilitation, removal and replacement of asphalt, sidewalks, and driveways, and topsoil and sodding.

PROJECT REQUIREMENTS

Contractor shall submit a completion report to SAWS when construction is completed. The completion report shall include but not limited to the following:

- Pre and post MPEG-1 format and written to CD/DVD video and video logs.
- Any test and/or submittals specified in this contract documents such as density tests, structural properties, etc. that are required.

PERFORMANCE TIME

PROJECT MILESTONES:

- I. Project milestones below indicate calendar days required for substantial completion and final completion of each "Project Site". Final completion of all "Project Sites" shall be achieved in 270 calendar days. "Project Site" number does not dictate the order in which "Project Sites" must be constructed. A maximum of two (2) simultaneous project sites is permitted until substantial completion is achieved. Sites 2 and 3 at Hall Park should be completed simultaneously due to their close proximity to each other. The Contractor should take this into consideration when developing their project schedule.

This project includes a significant amount of work within existing easements and sewer segments located in residential properties. Construction Rights of Entry (ROE's) are in the process of being obtained by SAWS to allow the Contractor access to existing easements or work areas outside available easements to perform the sewer work. Notification letters will be sent out prior to construction to properties where no additional access or work areas are needed outside existing easements, but fence removal may be required. The following sites will require construction ROEs or notification letters:

Site 1- La Sabre
Site 2- Hall Park- Construction ROEs
Site 3- Hall Park- Construction ROEs
Site 5- Commercial
Site 6- Darwin
Site 7- Gillette- Construction ROEs
Site 8- Oletha St.

If additional time is needed for SAWS to finalize ROE agreements at Hall Park or Gillette, those sites may be scheduled accordingly in the Contractor's schedule. ROE agreements include additional insurance requirements for Contractor. Contractor shall name the affected property owners as additional insured and provide a certificate evidencing coverage limits specified in each ROE agreement prior to contract execution.

“Project Site 1 (La Sabre)”– 60 Calendar Days (substantial completion)
Final completion 30 calendar days after substantial completion.

“Project Site 2 & 3 (Hall Park)”– 60 Calendar Days (substantial completion)
Final completion 30 calendar days after substantial completion
Ancillary Requirement: Right of Entry (ROE).
*Refer to **Table 1** which lists ROEs included for these segments*

“Project Site 5 (Commercial)”– 30 Calendar Days (substantial completion)
Final completion 30 calendar days after substantial completion

“Project Site 6 (Darwin)”– 60 Calendar Days (substantial completion)
Final completion 30 calendar days after substantial completion

“Project Site 7 (Gillette)”– 60 Calendar Days (substantial completion)
Final completion 30 calendar days after substantial completion.
Ancillary Requirement: Right of Entry (ROE).
*Refer to **Table 1** which lists ROEs included for this segment*

“Project Site 8 (Oletha)”– 30 Calendar Days (substantial completion)
Final completion 30 calendar days after substantial completion.

Table 1
Site 2, & 3- Hall Park

Address	Owner	Construction ROE or Notification Letter
4441 Hall Park	Cardenas, Maria	Construction ROE
4439 Hall Park	Quintero, Gabriela C.	Construction ROE
4437 Hall Park	Marmolejo, Christopher	Construction ROE
4435 Hall Park	Hernandez, Encarnacion	Construction ROE
4433 Hall Park	Sweet, Maria	Construction ROE
4431 Hall Park	Owen Frank H. & Candi Lee Burt	Construction ROE
4417 Hall Park	Mena, Laura	Notification Letter
4329 Hall Park	Quiros, Federico	Construction ROE
4331 Hall Park	Briones, Robert A & Alice B.	Construction ROE
4333 Hall Park	Flores, Manuel	Construction ROE

Site 7- Gillette

Address	Owner	Construction ROE or Notification Letter
9218 Ozalid St.	Ximenez, Manuel M.	Construction ROE
9222 Ozalid St.	Vasquez Angel & Maria B.	Construction ROE
9218 Ozalid St.	Parker Richard E. Jr.	Construction ROE

- II. After substantial completion has been achieved for a “Project Site Location”, final completion must be completed within 30 calendar days. The Contractor is required to provide the SAWS Inspector and the Engineer final redlines before the segment can qualify for final completion.

Substantial completion is when all rehabilitation work has been completed, tested, and the sewer system has been accepted for service. Substantial completion includes manhole rehabilitation and installation of new ring, cover, and concrete encasement. Final completion is declared when the final punch list is approved by SAWS, all infrastructure is in the ground, and final pavement and surface restoration is completed. Final completion includes the removal of all bypass pumping equipment.

PAYMENT

- I. As specified in the Contract Documents unit price cost for the items bid shall include all the necessary and incidental work as subsidiary to the bid item, unless specifically called out in the plans or approved by SAWS. Pay items indicating, no separate or additional pay for incidental, related, associated or other work will take precedence if in conflict with other pay provisions. If no pay item is included for any stipulated item, it will be considered as subsidiary to other pay items.
- II. It is the Contractor’s responsibility for the preparation, research, submittal and layout of the location specific submittals, including the Storm Water Pollution Prevention Plan, Traffic Control Plan, the Bypass Pumping Plan, and its approvals at not cot to SAWS. Tree Preservation Protection work shall be subsidiary to Item 101 Preparing Right-of-

Way.

- III. There will be no measurement or payment for insurance, bonding, and permitting costs on this contract. Clearing, grubbing, and tree pruning shall be subsidiary to Item 101 Preparing Right of Way.

ACCESS

- I. **ACCESS to EASEMENT AREAS:** Access to some easements will require close coordination with the landowner and their tenants, if any. The Contractor shall coordinate with the Inspector to provide notice to all involved parties well in advance of the work and indicate when field work will begin at each project location and provide an explanation of the type of work to be done and approximate schedule. The Contractor will bear full responsibility for any and all of his actions or results of any of his activities, intended or not, regardless where his work is taking place.

CITY OF SAN ANTONIO REQUIREMENTS

1. Contractor is to follow all City of San Antonio (COSA) requirements for project signage and visible identification when working within COSA R.O.W.
2. Contractor is to follow the COSA requirement for impacted collector or arterial streets, which requires the Contractor to provide a seven (7) day notification by electronic message board before work is to occur. Message board is to remain in place until three (3) days after construction begins. Contractor is also to provide a three (3) day notification to be made by door hanger to impacted residents or businesses.
3. Any Traffic Control Plans included in the contract documents are suggested routes only. Contractor shall submit their Traffic Control Plans to COSA for review and approval at no additional cost to SAWS.

CONSENT DECREE NOTICE PROVISION

The San Antonio Water System (“SAWS”), the United States of America and the State of Texas have entered into a Consent Decree in Civil Action No. 5:13-cv-00666- DAE, United States of America and State of Texas v. San Antonio Water System, in the United States District Court for the Western District of Texas, San Antonio Division (the “Consent Decree”). A copy of the Consent Decree is available at

<http://www.saws.org/Infrastructure/EPA/download.cfm>

Work performed pursuant to this contract is work that SAWS is required to perform pursuant to the terms of the Consent Decree. In the event of any conflict between the terms and provisions of this Consent Decree Notice Provision and any other terms and provisions of this Contract or the Contract Documents, the terms and provisions of this Consent Decree Notice Provision shall prevail.

A. Retention of documents.

Contractor shall retain and preserve all non-identical copies of all documents, reports, research, analytical or other data, records or other information of any kind or character (including documents, records, or other information in electronic form including, but not limited to e-mails) in its or its sub-contractors' or agents' possession or control, or that come into its or its sub-contractors' or agents' possession or control, and that relate in any manner to this contract, or the performance of any work described in this contract (the "Information"). This retention requirement shall apply regardless of any contrary corporate or institutional policy or procedure or legal requirement. Contractor, Contractor's sub-contractors and agents shall retain and shall not destroy any of the Information until such time as Contractor has received written approval from the General Counsel of SAWS that the Information or any part of the Information may be destroyed. Contractor shall, within 30 days after receipt of a written request by SAWS, deliver the Information to SAWS. Contractor shall instruct and require its agents and sub-contractors performing any part of the work described in this contract to comply with the requirements of this paragraph.

B. Notification of events that may cause delay.

If any event occurs that may delay performance by Contractor, or Contractor's agents or sub-contractors of any work or obligation of any kind under this contract, Contractor shall provide notice in accordance with the Notice Provisions of this contract to SAWS within two (2) business days of the date Contractor or Contractor's agents or sub-contractors first knew that the event might cause a delay. Contractor shall provide a written explanation and description of the reasons for the delay, the anticipated duration of the delay, all actions taken or to be taken to prevent or minimize the delay, and a schedule for implementation of any measures to be taken to prevent or mitigate the delay or the effect of the delay. **TIME IS OF THE ESSENCE** in the performance of the requirements of this paragraph and of any work to be performed by the Contractor in this contract.

C. Liability for stipulated penalties.

The Consent Decree provides that the United States of America, the United States Environmental Protection Agency and the State of Texas may assess stipulated penalties against SAWS upon the occurrence of certain events. To the extent that Contractor or Contractor's agents or sub-contractors cause or contribute to, in whole or in part, the assessment of any stipulated penalty against SAWS, Contractor agrees that it shall pay to SAWS the full amount of any stipulated penalty assessed against and paid by SAWS that is caused or contributed to in whole or in part by any action, failure to act, or failure to act within the time required by any provision of this contract. Contractor shall also pay to SAWS all costs, attorney fees, expert witness fees and all other fees and expenses incurred by SAWS in connection with the assessment or payment of any such stipulated penalties, or in contesting the assessment or payment of any such stipulated penalties. In addition to any and all other remedies to which SAWS may be entitled at law or in equity, Contractor expressly authorizes SAWS to withhold all amounts assessed and paid as stipulated penalties, and all associated costs, fees, or expenses from any amount unpaid to Contractor under the terms of this contract, or from any retainage provided in the contract.

Special Specification 6001

Portable Changeable Message Sign



1. DESCRIPTION

Furnish, operate, and maintain portable trailer mounted changeable message sign (PCMS) units.

2. MATERIALS

Furnish new or used material in accordance with the requirements of this Item and the details shown on the plans. Provide a self-contained PCMS unit with the following:

- Sign controller
- Changeable Message Sign
- Trailer
- Power source

Paint the exterior surfaces of the power supply housing, supports, trailer, and sign with Federal Orange No. 22246 or Federal Yellow No. 13538 of Federal Standard 595C, except paint the sign face assembly flat black.

2.1. **Sign Controller.** Provide a controller with permanent storage of a minimum of 75 pre-programmed messages. Provide an external input device for random programming and storage of a minimum of 75 additional messages. Provide a controller capable of displaying up to 3 messages sequentially. Provide a controller with adjustable display rates. Enclose sign controller equipment in a lockable enclosure.

2.2. **Changeable Message Sign.** Provide a sign capable of being elevated to at least 7 ft. above the roadway surface from the bottom of the sign. Provide a sign capable of being rotated 360° and secured against movement in any position.

Provide a sign with 3 separate lines of text and 8 characters per line minimum. Provide a minimum 18 in. character height. Provide a 5 × 7 character pixel matrix. Provide a message legibility distance of 600 ft. for nighttime conditions and 800 ft. for normal daylight conditions. Provide for manual and automatic dimming light sources.

The following are descriptions for 3 screen types of PCMS:

- **Character Modular Matrix.** This screen type comprises of character blocks.
- **Continuous Line Matrix.** This screen type uses proportionally spaced fonts for each line of text.
- **Full Matrix.** This screen type uses proportionally spaced fonts, varies the height of characters, and displays simple graphics on the entire sign.

2.3. **Trailer.** Provide a 2 wheel trailer with square top fenders, 4 leveling jacks, and trailer lights. Do not exceed an overall trailer width of 96 in. Shock mount the electronics and sign assembly.

2.4. **Power Source.** Provide a diesel generator, solar powered power source, or both. Provide a backup power source as necessary.

2.5. **Cellular Telephone.** When shown on the plans, provide a cellular telephone connection to communicate with the PCMS unit remotely.

3. CONSTRUCTION

Place or relocate PCMS units as shown on the plans or as directed. The plans will show the number of PCMS units needed, for how many days, and for which construction phases.

Maintain the PCMS units in good working condition. Repair damaged or malfunctioning PCMS units as soon as possible. PCMS units will remain the property of the Contractor.

4. MEASUREMENT

This Item will be measured by each PCMS or by the day used. All PCMS units must be set up on a work area and operational before a calendar day can be considered measurable. When measurement by the day is specified, a day will be measured for each PCMS set up and operational on the worksite.

5. PAYMENT

The work performed and materials furnished in accordance with this Item and measured as provided under "Measurement" will be paid for at the unit price bid for "Portable Changeable Message Sign." This price is full compensation for PCMS units; set up; relocating; removing; replacement parts; batteries (when required); fuel, oil, and oil filters (when required); cellular telephone charges (when required); software; and equipment, materials, tools, labor, and incidentals.

File: L:\SHARE\CAD\DWG\SSORP_M-14\Drawings\PKGS-OPEN\DWG\Site-00_GenSheets\SheetSM14-SQ-01.dwg Last Save: 10/16/2020 5:10 PM Last saved by: Elara
 Last plotted by: Elizabeth Lara Plot Style: AECmonochrome.ctb Plot Scale: 1:1 Plot Date: 10/19/2020 12:14 PM Plotter used: DWG To PDF.pc3

SUMMARY OF QUANTITIES

Item #	Description	Units	Est. Qty.
100.1	Mobilization	LS	1
101.1	Preparing Right-of-Way (inclusive of Easements, Rights of Entry, etc.)	LS	1
103.1	Remove Concrete Curb	LF	77
103.3	Remove Concrete Sidewalks and Driveways	SF	1,384
203.1	Prime Coat	GAL	74
203.2	Tack Coat	GAL	24
205.3	HMAC, Type 'C' (3" Comp. Depth) (Collector/Arterial)	SY	246
205.4	HMAC, Type 'D' (2" Comp. Depth) (Local/Resid. Streets)	SY	130
206.1	Asphalt Treated Base (10" Comp. Depth)	SY	372
413.1	Flowable Fill	CY	30
500.1	Concrete Curb	LF	69
502.1	Concrete Sidewalk	SY	22
503.1	Portland Cement Concrete Driveway	SY	137
503.4	Asphaltic Concrete Driveway	SY	21
507.5	Chain Link Wire Fence (Vehicular Gates - 8-foot width)	EA	2
515.1	Topsoil (4" Depth)	CY	391
516.1	Bermuda Sodding	SY	2,814
516.2	St. Augustine Sodding	SY	733
520.1	Hydromulching	SY	514
530.1	Barricades, Signs, and Traffic Handling (Site 1 - La Sabre)	LS	1
530.1	Barricades, Signs, and Traffic Handling (Sites 2 & 3 - Hall Park)	LS	1
530.1	Barricades, Signs, and Traffic Handling (Site 5 - Commerce)	LS	1
530.1	Barricades, Signs, and Traffic Handling (Site 6 - Darwin)	LS	1
530.1	Barricades, Signs, and Traffic Handling (Site 7 - Gillette)	LS	1
530.1	Barricades, Signs, and Traffic Handling (Site 8 - Oletha)	LS	1
535.1	4-inch Wide Yellow Line	LF	20
535.2	4-inch Wide White Line	LF	10
535.9	Left White Arrow	EA	1
550	Trench Excavation Safety Protection	LF	2,002
848	8" PVC Sanitary Sewer Pipe (SDR 26) (All Depths)	LF	1,975
852.1	Sanitary Sewer Manhole (4' Dia.) (0'-6' Depth)	EA	12
852.2	Sanitary Sewer Drop Manhole (4' Dia.) (0'-6' Depth)	EA	3
852.3	Extra Depth Manhole (>6')	VF	25
854	6" PVC Sanitary Sewer Lateral Pipe (SDR 26) (All Depths)	LF	1,511
854	Two-Way Sanitary Sewer Clean-out	EA	76
855	Reconstruction of Existing Manhole	EA	1
858	Concrete Encasement, Cradles, Saddles, and Collars	CY	21
864-S1	Bypass Pumping (Site 1 - La Sabre - 8")	LS	1
864-S1	Bypass Pumping (Sites 2 & 3 - Hall Park - 8")	LS	1
864-S1	Bypass Pumping (Site 5 - Commerce - 8")	LS	1
864-S1	Bypass Pumping (Site 6 - Darwin - 8")	LS	1
864-S1	Bypass Pumping (Site 7 - Gillette - 8")	LS	1
864-S1	Bypass Pumping (Site 8 - Oletha - 8")	LS	1
866	Sewer Main Television Inspection (Pre-Construction) (8" - 15" Dia.)	LF	3,444
866	Sewer Main Television Inspection (Post-Construction) (8" - 15" Dia.)	LF	1,975
900	Pipe Burst 8" Sanitary Sewer Pipe (DR 13.5 160 PSI, All Depths)	LF	179
900	Pipe Burst 8" Sanitary Sewer Pipe (All Mat'l. Types, All Depths)	LF	1,290
910	Manhole Rehabilitation (incl. New Ring/Cover & Encasement)	VF	44
1103.1	Point Repair, 8" Dia. (up to 9 LF) (0'-10' Depth)	EA	3
6001	Portable Changeable Message Sign (TxDOT Spec)	EA	4
SS 2010	Removal & Replacement of Fences (All Types, Sizes) (Site 2 - Hall Park)	LS	1
SS 2010	Removal & Replacement of Fences (All Types, Sizes) (Site 3 - Hall Park)	LS	1
SS 2010	Removal & Replacement of Fences (All Types, Sizes) (Site 7 - Gillette)	LS	1



Javier Garcia 10/15/20

Garcia Infrastructure Consultants, LLC
 Texas Firm No. F-17794
 12042 Blanco Rd., Ste. 203
 San Antonio, Texas 78216
 Ph. (210) 437-0323

▲	ADDENDUM 4	EL	JG	10/15/2020
No.	Revision	Drawn	Approved	Date

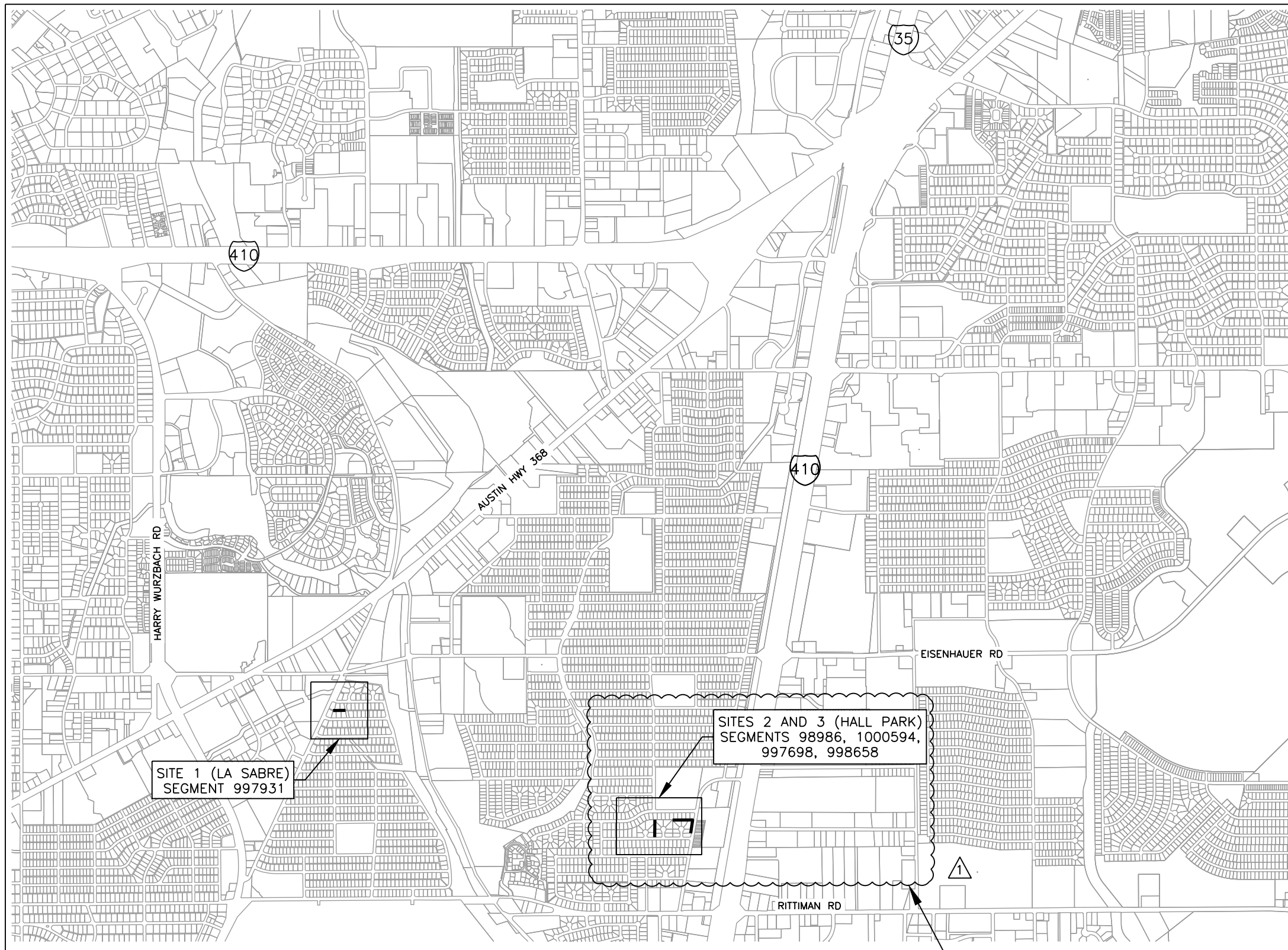
REVISIONS
MULTIPLE SEWERSHED PACKAGE 14
 SUMMARY OF QUANTITIES

DEVELOPER: SAN-ANTONIO-WATER-SYSTEM
 CONT. BUDGET PROJ.

SUBMITTED _____
 APPROVED _____

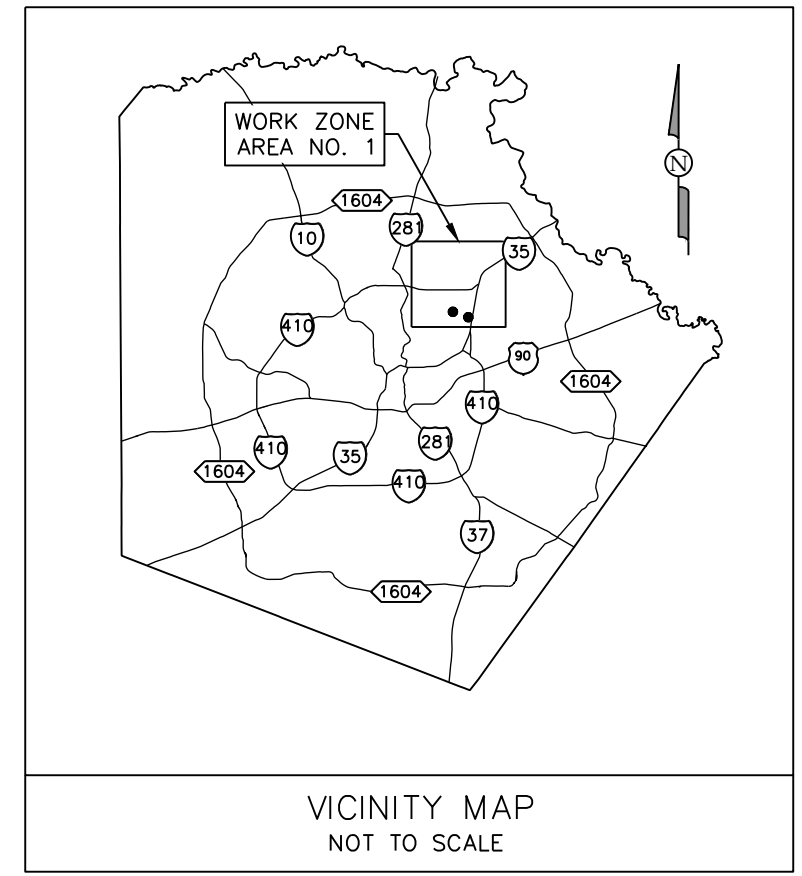
MAP No. 000-000	SHEET 5 OF 48
SECT. No. _____	
DR. JFM CK. JGM JOB No. _____	

File: L:\SHARE\1\CADD\SAWS\1037-SSORP_M-14\Drawings\PKGS-OPEN\UT\Site-00_GenSheets\SheetS-M14-OA-01.dwg Last Save: 10/15/2020 11:12 AM Last saved by: Elara
 Last plotted by: Elizabeth Lara Plot Style: AEC Mono.ctb Plot Scale: 1:1 Plot Date: 10/16/2020 2:45 PM Plotter used: DWG To PDF.pc3



1 WORK ZONE AREA 1 - OPEN CUT
 SCALE: 1" = 2000'

SITE 4 REMOVED FROM PROJECT



GIC Garcia Infrastructure Consultants, LLC
 Texas Firm No. F-17794
 12042 Blanco Rd., Ste. 203
 San Antonio, Texas 78216
 Ph. (210) 437-0323

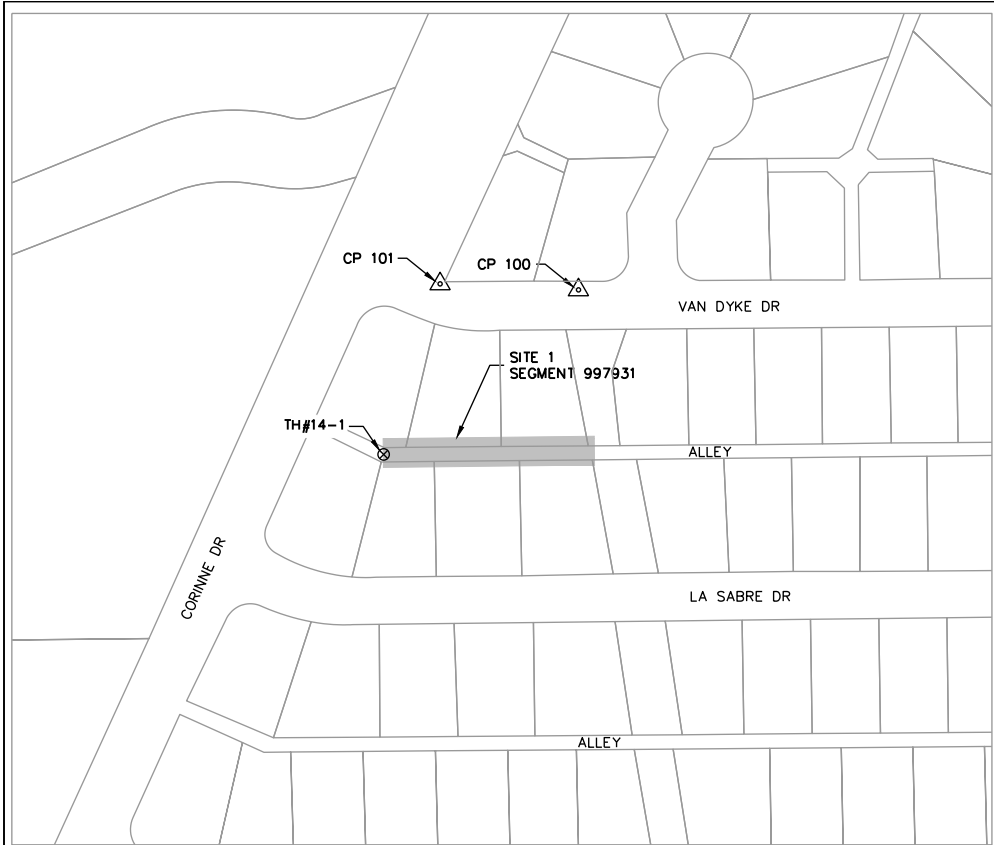
ADDENDUM 4	EL	JG	10/15/2020
No.	Revision	Drawn	Approved Date

REVISIONS
SAWS MULTIPLE SEWERSHED PACKAGE 14
 WORK ZONE AREA 1 (1 of 3)

DEVELOPER: SAN-ANTONIO-WATER-SYSTEM
 CONT. BUDGET PROJ.

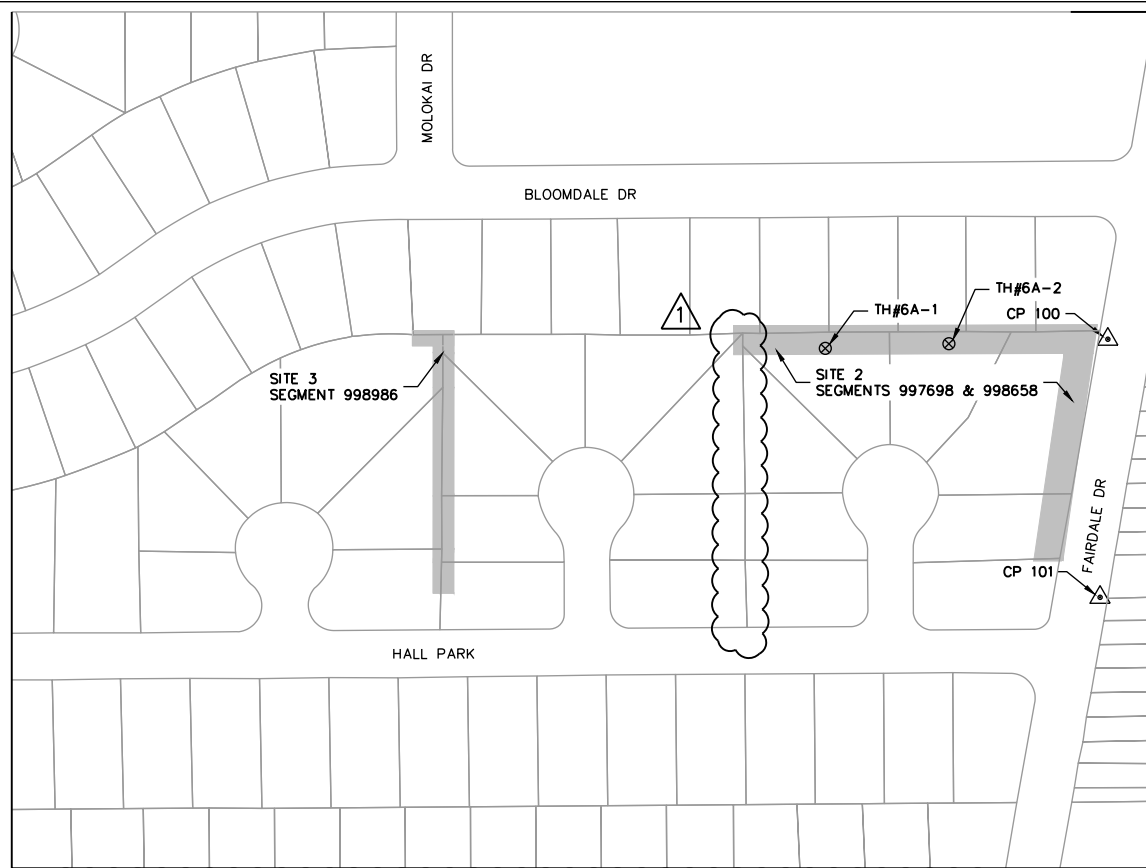
SUBMITTED _____
 APPROVED _____
 MAP No. 000-000 SHEET 7
 SECT. No. 7
 DR. JFM CK. JGM JOB No. OF 48

File: L:\SHARE\ICADD\SAWS\1037-SSORP_M-14\Drawings\PKGS-OPEN\UTS\Site-00_GenSheet\SheetSM14-CTRL_WS_01.dwg Last saved by: GIC-03
 Last plotted by: Elizabeth Lara Plot Style: AEC.ctb Plot Date: 10/16/2020 2:49 PM Plot Size: 11" x 17" Plot Scale: 1" = 200'



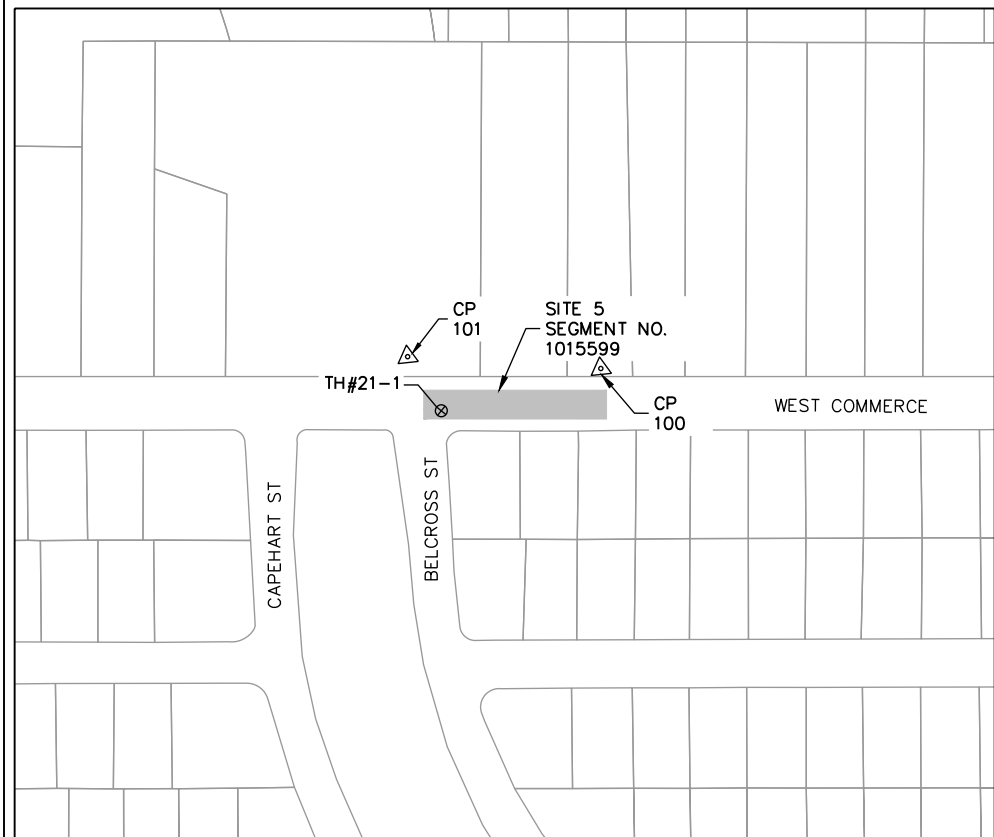
**SITE NO. 1 (SEGMENT #997931)
HORIZONTAL AND VERTICAL CONTROL**

SCALE: 1" = 200'



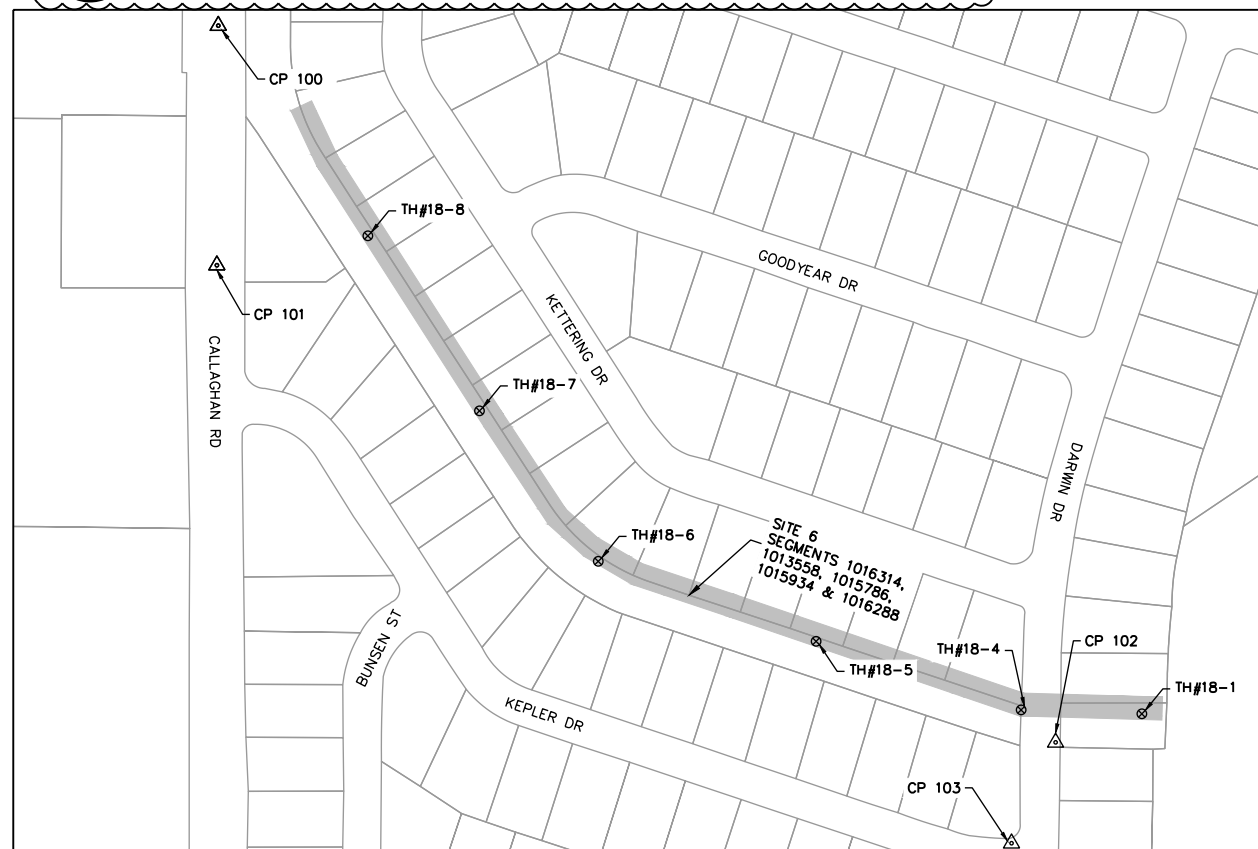
**SITE NOS. 2 AND 3 (SEGMENTS #998986, 997698, 998658)
HORIZONTAL AND VERTICAL CONTROL**

SCALE: 1" = 200'



**SITE NO. 5 (SEGMENT #1015599)
HORIZONTAL AND VERTICAL CONTROL**

SCALE: 1" = 200'



**SITE NO. 6 (SEGMENTS #1016314, 1013558, 1015786, 1015934, 1016288)
HORIZONTAL AND VERTICAL CONTROL**

SCALE: 1" = 250'

Site 1				
CP#	N:	E:	ELEV:	Description
100	13727763.1100	2151645.2600	689.49	IRON ROD SET W. CAP
101	13727769.3100	2151501.1400	691.83	IRON ROD SET W. CAP
Sites 2 & 3				
CP#	N:	E:	ELEV:	Description
100	13725667.8000	2157795.6400	723.59	MAGNAIL
101	13725398.9900	2157787.5700	722.49	MAGNAIL
Site 5				
CP#	N:	E:	ELEV:	Description
100	13705462.6300	2100944.3900	712.23	IRON ROD SET W. CAP
101	13705495.7000	210745.6000	706.72	IRON ROD SET W. CAP
Site 6				
CP#	N:	E:	ELEV:	Description
100	13716949.7500	2094980.7200	799.65	MAGNAIL
101	13716637.8800	2094979.1500	800.10	MAGNAIL
102	13716016.6600	2096071.2600	771.20	IRON ROD SET W/ CAP
103	13715884.8300	2096014.4200	771.59	IRON ROD SET W/ CAP

SITE 4 REMOVED FROM PROJECT



Javier Garcia 10/15/20

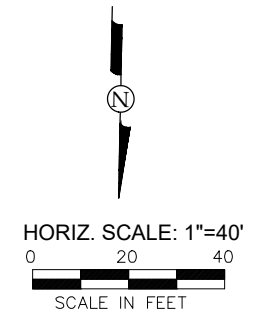
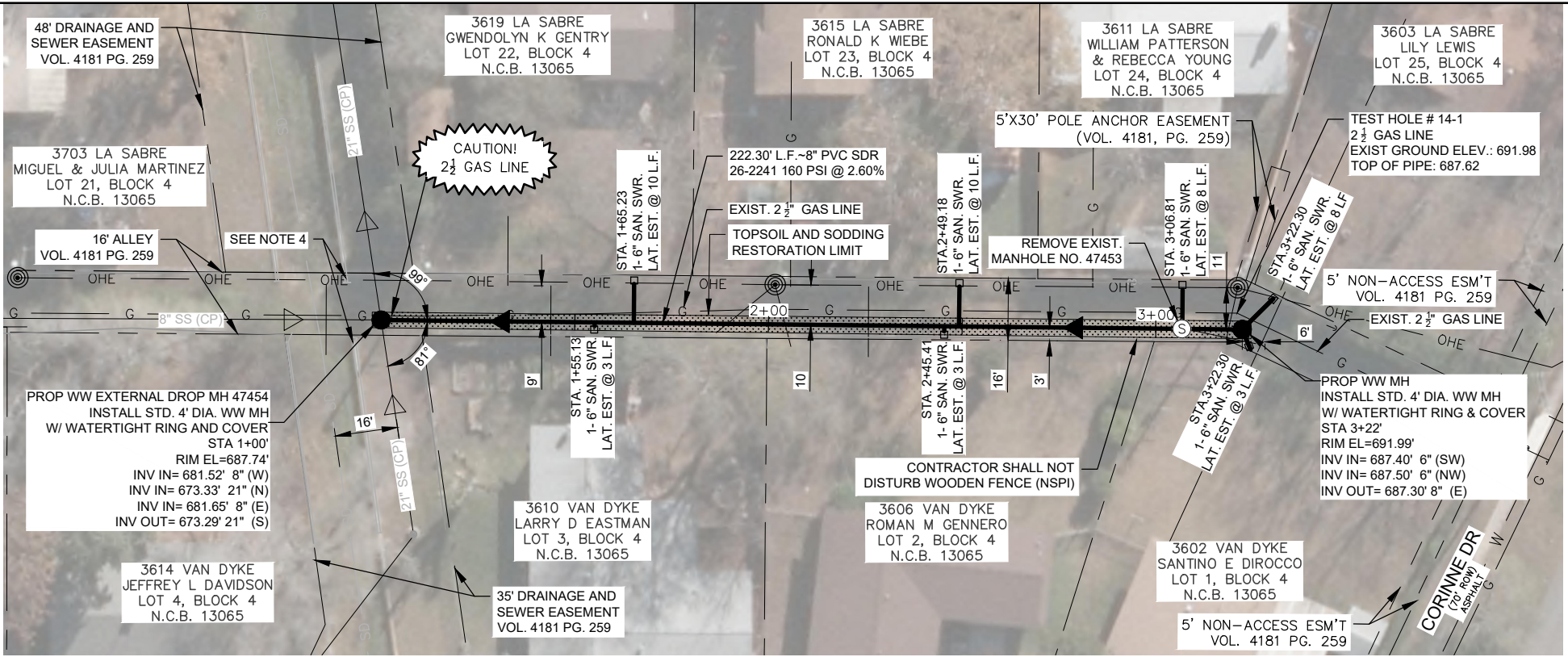
GIC Garcia Infrastructure Consultants, LLC
 Texas Firm No. F-17794
 12042 Blanco Rd., Ste. 203
 San Antonio, Texas 78216
 Ph. (210) 437-0323

No.	Revision	Drawn	Approved	Date
1	ADDENDUM 4	EL	JG	10/15/2020

REVISIONS
MULTIPLE SEWERSHED PACKAGE 14
 HORIZONTAL AND VERTICAL CONTROL (1 OF 2)

DEVELOPER: SAN-ANTONIO-WATER-SYSTEM CONT. BUDGET PROJ.

SUBMITTED _____
 APPROVED _____
 MAP No. 000-000 SHEET 10
 SECT. No. _____ OF 48
 DR. JFM | CK. JGM | JOB No. _____

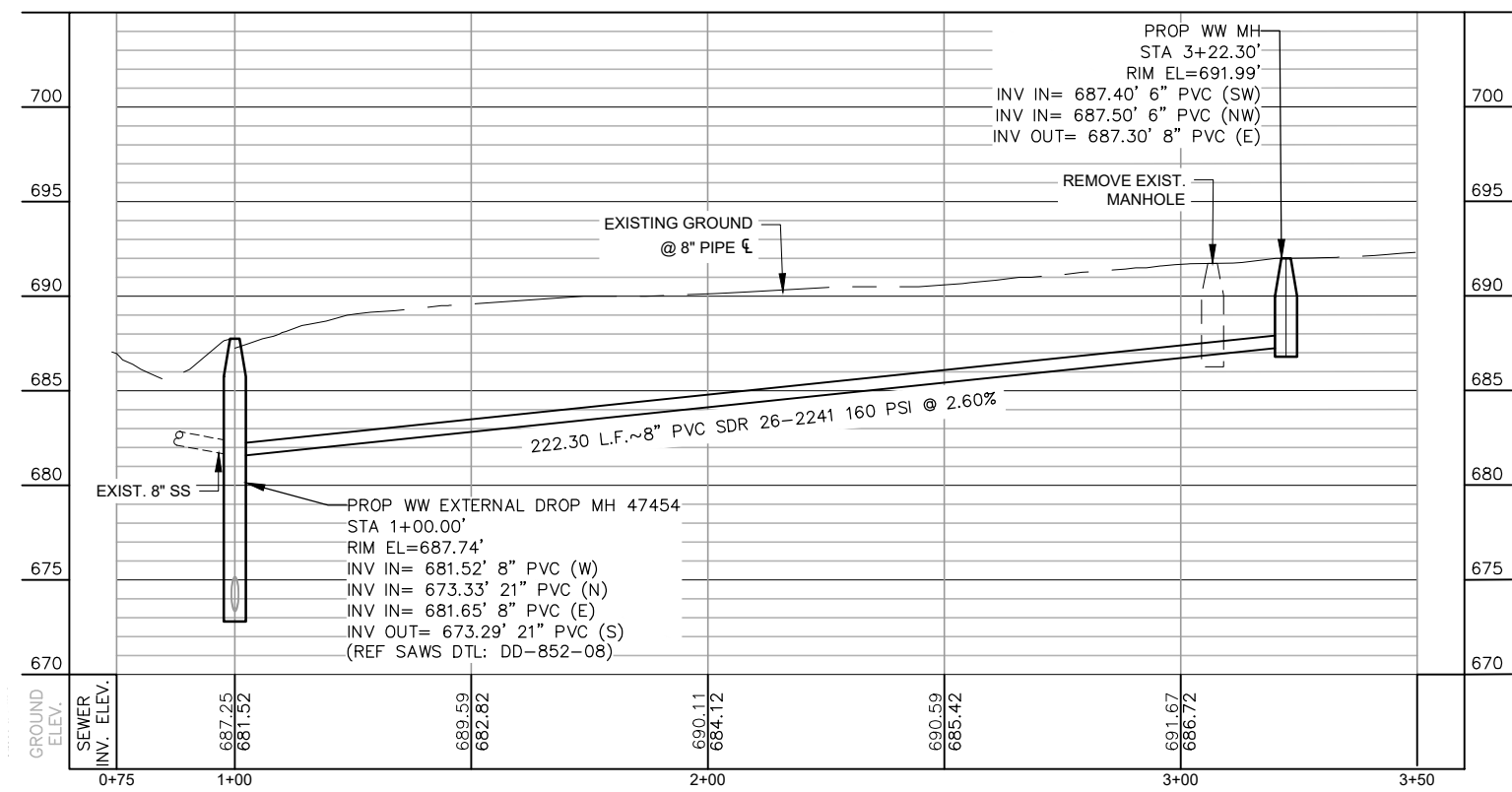


LEGEND

ELECTRIC (OVERHEAD)	—OHE—
FENCE (CHAINLINK)	—○—○—
FENCE (WOOD)	—//—//—
FIBER OPTIC	—FO—
FLOW ARROW (EX.)	▶
FLOW ARROW (PR.)	◀
GAS MAIN (BURIED)	—UG—
GAS VALVE	⊕
PARCEL LOT LINE	—
PARCEL R.O.W. LINE	---
PAVEMENT REPLACEMENT	▨
POWER POLE	⊙
POWER POLE GUY WIRE	—
SANITARY SEWER MAIN (EX)	—SS—
EX. SANITARY SEWER MANHOLE	⊙
PR. SANITARY SEWER MANHOLE	⊙
STREET SIGN	⊙
TELEPHONE (BURIED)	—UGT—
TELEPHONE (OVERHEAD)	—OHT—
TELEPHONE MANHOLE	⊕
TELEPHONE PEDESTAL/BOX	⊕
WATER MAIN	—WL—
WATER METER	⊕
WATER VALVE/COVER	⊕

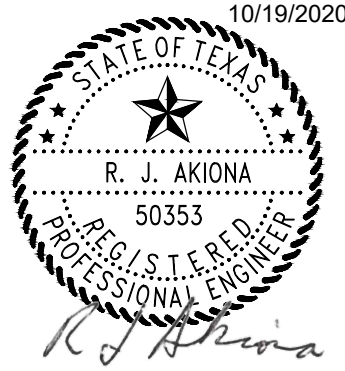
ITEM	DESCRIPTION	UNIT	QUANTITY
515	TOPSOIL	CY	14
516	BERMUDA SODDING	SY	120
530.1	BARRICADES, SIGNS, & TRAFFIC HANDLING (SITE 1 - LA SABRE)	LS	1
560	TRENCH EXCAVATION SAFETY PROTECTION	LF	223
848	8" PVC SANITARY SEWER LINE (SDR-26), (ALL DEPTHS)	LF	223
852.1	SANITARY SEWER MANHOLE (0'-6")	EA	1
852.2	SANITARY SEWER DROP MANHOLE	EA	1
852.3	EXTRA DEPTH MANHOLE (>6")	VF	6
854	6" PVC SANITARY SEWER LATERAL PIPE (SDR26, 160 PSI) (ALL DEPTHS)	LF	45
854	2-WAY SANITARY SEWER CLEANOUT	EA	7
864-S1	BYPASS PUMPING, SMALL DIAMETER SANITARY SEWER (SITE 1 - LA SABRE)	LF	1
866	PRE-CONSTRUCTION SANITARY SEWER MAIN TELEVISION INSPECTION (8"-15" MAIN)	LF	223
866	POST-CONSTRUCTION SANITARY SEWER MAIN TELEVISION INSPECTION (8"-15" MAIN)	LF	223
6001	PORTABLE CHANGEABLE MESSAGE SIGN (TDDOT SPEC)	EA	2

- NOTE:**
- PROPERTY LINES SHOWN ARE APPROXIMATE.
 - CONTRACTOR TO VERIFY LOCATION AND DEPTH OF ALL UTILITIES AND COORDINATE WITH ENGINEER PRIOR TO CONSTRUCTION.
 - SANITARY SEWER LATERALS SHALL BE REPLACED IN ACCORDANCE WITH ITEM 854. THE LOCATIONS SHOWN ARE APPROXIMATE AND SHALL BE FIELD VERIFIED BY THE CONTRACTOR PRIOR TO CONSTRUCTION.
 - DO NOT DISTURB THE CONCRETE WALL OF THE DRAINAGE CHANNEL. THE CONTRACTOR WILL BE RESPONSIBLE FOR REPAIRING ANY DAMAGE TO COSA DRAINAGE INFRASTRUCTURE AT THE CONTRACTOR'S EXPENSE.



**LINE A - PROP. 8" Ø SANITARY SEWER
COMPKEY 997931 - 222.30 L.F.**
SCALE: 1" = 40' (H), 1" = 10' (V)

TRENCH EXCAVATION SAFETY PROTECTION:
CONTRACTOR AND/OR CONTRACTOR'S INDEPENDENTLY RETAINED EMPLOYEE OR STRUCTURE/DESIGN/GEOTECHNICAL/SAFETY/ EQUIPMENT CONSULTANT, IF ANY, SHALL REVIEW THESE PLANS AND AVAILABLE GEOTECHNICAL INFORMATION AND THE ANTICIPATED INSTALLATION SITE(S) WITHIN THE PROJECT WORK AREA IN ORDER TO IMPLEMENT CONTRACTOR'S TRENCH EXCAVATION SAFETY PROTECTION SYSTEMS, PROGRAMS AND/OR PROCEDURES. THE CONTRACTOR'S IMPLEMENTATION OF THE SYSTEMS, PROGRAMS AND/OR PROCEDURES SHALL PROVIDE FOR ADEQUATE TRENCH EXCAVATION SAFETY PROTECTION THAT COMPLIES WITH, AS A MINIMUM, OSHA STANDARDS FOR TRENCH EXCAVATIONS. SPECIFICALLY, CONTRACTOR AND/OR CONTRACTOR'S INDEPENDENTLY RETAINED EMPLOYEE OR SAFETY CONSULTANT SHALL IMPLEMENT A TRENCH SAFETY PROGRAM IN ACCORDANCE WITH OSHA STANDARDS GOVERNING THE PRESENCE AND ACTIVITIES OF INDIVIDUALS WORKING IN AND AROUND TRENCH EXCAVATION.



Garcia Infrastructure Consultants, LLC
Texas Firm No. F-17794
12042 Blanco Rd., Ste. 203
San Antonio, Texas 78216
Ph. (210) 437-0323

MENDEZ ENGINEERING
Registration # F-14070
12950 Country Parkway STE 120
San Antonio, Texas 78216
Office: 210-802-0808
www.MendezEngineering.com

ADDENDUM No. 4	JJC	RA	10/19/20
No.	Revision	Drawn	Approved

REVISIONS

MULTIPLE SEWERSHED PACKAGE 14
SITE 1 - COMPKEY 997931
PLAN AND PROFILE
SANITARY SEWER REPLACEMENT

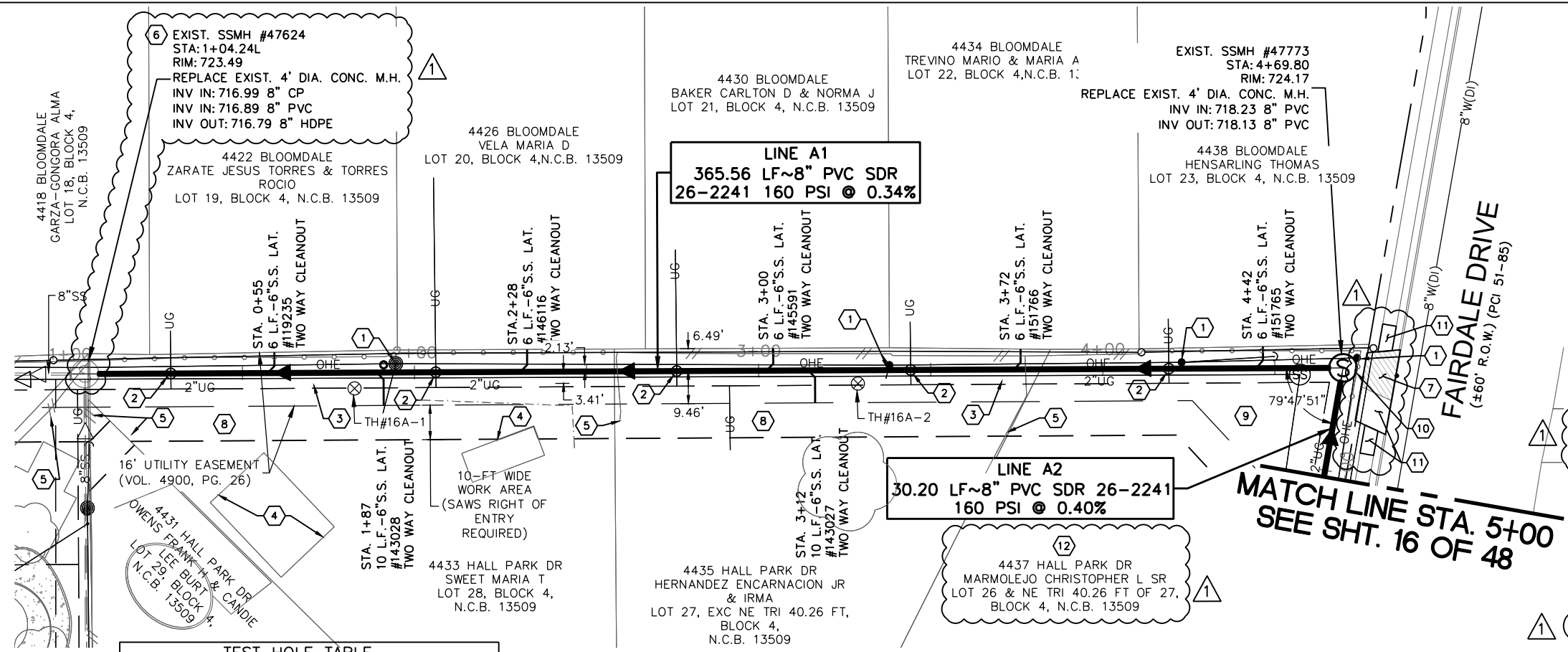
DEVELOPER: SAN-ANTONIO-WATER-SYSTEM
CONT. BUDGET PROJ.

SUBMITTED _____
APPROVED _____

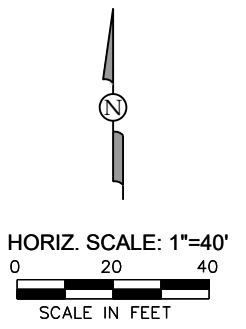
MAP No. 000-000	SHEET 12 OF 40
SECT. No.	JOB No.
DR. JJC	CK. RA

File: G:\Projects\2019\1906-5 SAVS - SDC PK 14 - Garcia\Civil\1906-1 SAVS - SDC PK 14 - C3 PLANS.dwg Last Save: 10/19/2020 11:26 AM Last saved by: Jcalvillo
 Last plotted by: Jose Calvillo Plot Style: AECmono.ctb Plot Scale: 1:1 Plot Date: 10/19/2020 2:28 PM Plotter Used: DWG To PDF.pc3

File: L:\SHARE\1\CADD\SWMS\1037-SSORP_M-14\Drawings\PKGS-OPEN\UT\Site-2 (16a)_Hall_Park-997698-SWIR01.dwg Last Save: 10/16/2020 8:58 AM Last saved by: Elara
 List plotted by: Elizabeth Lara Plot Style: AECmonochrome.ctb Plot Scale: 1:1 Plot Date: 10/16/2020 2:53 PM Plotter used: DWG To PDF.pc3

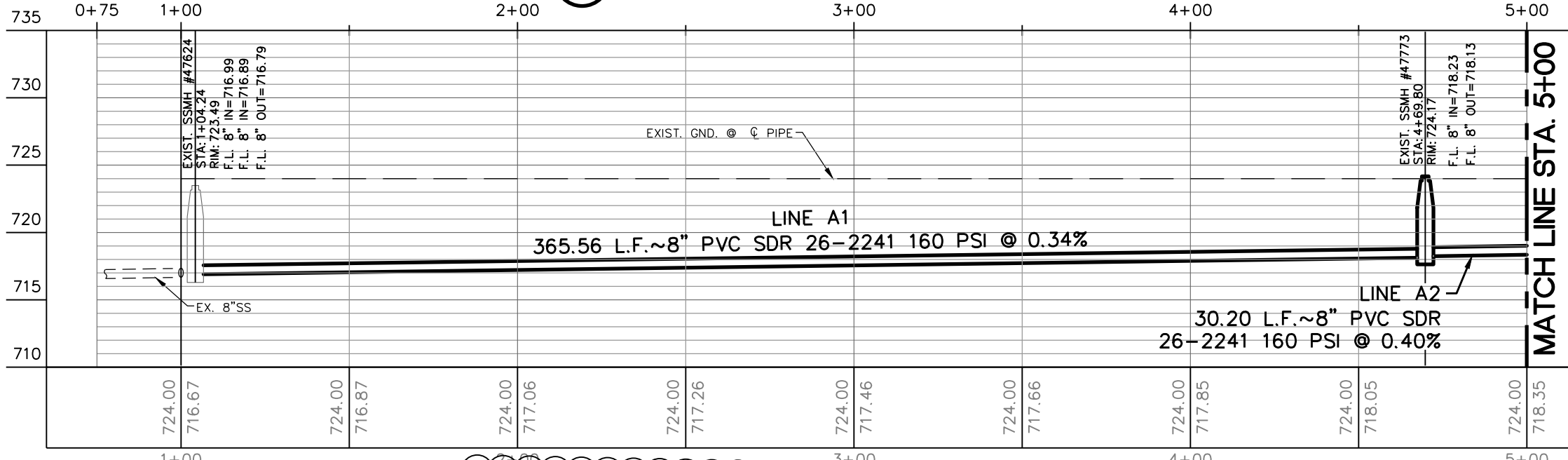


- ### KEY NOTES
- PROVIDE TEMPORARY BRACING OF UTILITY POLES AS NEEDED DURING INSTALLATION OF SEWER MAIN FOR ALL POLES LESS THAN 5-FT FROM UTILITY TRENCH MEASURED FROM OUTSIDE TRENCH TO OUTSIDE OF POLE (COORDINATE WITH CPS ENERGY) (N.S.P.I.)
 - WARNING GAS LINE CROSSING AT PROPOSED SEWER MAIN.
 - EXISTING 2-INCH GAS MAIN AND SEWER MAIN ARE IN CLOSE PROXIMITY. EXERCISE CAUTION DURING EXCAVATION TO PREVENT DAMAGE TO GAS MAIN
 - PROTECT EXISTING SHEDS/OTHER IMPROVEMENTS WITHIN RESIDENTIAL PROPERTIES (N.S.P.I.)
 - REMOVE AND REPLACE SIDE LOT FENCING. TEMPORARY FENCING ACROSS EACH LOT TO ISOLATE WORK AREA IS REQUIRED (N.S.P.I.)
 - NO FENCING SHALL BE CONSTRUCTED OVER SANITARY SEWER MANHOLE.
 - WIDEN EXIST. DRIVEWAY TO MATCH WIDTH OF 16' EASEMENT FOR FUTURE INGRESS/EGRESS PURPOSES.
 - ITEM 516.1 QUANTITY IS BASED ON NEED TO SOD FULL WIDTH OF BOTH THE EASEMENT AND SPECIFIED WORK AREAS FOR THE LENGTH OF THE OPEN CUT.
 - ITEM 516.2 QUANTITY IS BASED ON NEED TO SOD FULL WIDTH OF BOTH THE EASEMENT AND SPECIFIED WORK AREAS FOR THE LENGTH OF THE OPEN CUT.
 - REPLACE 8' WIDE GATE WITH 16' WIDE GATE. TO BE PAID UNDER SPEC. 507.5
 - CONTRACTOR TO CAREFULLY REMOVE EXISTING CONCRETE RESIDENTIAL DRIVEWAY AND EXIST. SIDEWALK REQUIRED TO CONSTRUCT A REPLACEMENT 16-FT WIDE (AT PROPERTY LINE) CONCRETE DRIVEWAY. SAW-CUT THE EXIST. SIDEWALK AT THE SECOND PANEL JOINT FROM THE LIMITS OF THE NEW DRIVEWAY. ELEVATIONS AND GRADES OF PROPOSED DRIVEWAY AND SIDEWALKS TO MATCH EXIST. GRADES AND ELEVATIONS. ANY REPAIRS TO THE STREET PAVEMENT RESULTING FROM THE DEMOLITION OR THE CONSTRUCTION OF THE REPLACEMENT DRIVEWAY AND SIDEWALK SHALL BE CONSIDERED AS INCIDENTAL AND A 'NO SEPARATE PAY ITEM'.
 - PROTECT EXISTING IMPROVEMENTS TO INCLUDE POOL HOUSE AND DECK, PERMANENT PLAYGROUND SET, AND IN-GROUND TRAMPOLINE.



NUMBER	DESCRIPTION	COVER
16A-1	2.5" BLACK STEEL GAS PIPE	4.28'
16A-2	2.5" BLACK STEEL GAS PIPE	4.28'

PROP. 8"Ø SANITARY SEWER REPLACEMENT
COMPKEY 997698 & 998658 - 400.00 L.F.
 SCALE: 1" = 40'



TRENCH EXCAVATION SAFETY PROTECTION:
 CONTRACTOR AND/OR CONTRACTOR'S INDEPENDENTLY RETAINED EMPLOYEE OR STRUCTURE/DESIGN/GEOTECHNICAL/SAFETY/ EQUIPMENT CONSULTANT, IF ANY, SHALL REVIEW THESE PLANS AND AVAILABLE GEOTECHNICAL INFORMATION AND THE ANTICIPATED INSTALLATION SITE(S) WITHIN THE PROJECT WORK AREA IN ORDER TO IMPLEMENT CONTRACTOR'S TRENCH EXCAVATION SAFETY PROTECTION SYSTEMS, PROGRAMS AND/OR PROCEDURES. THE CONTRACTOR'S IMPLEMENTATION OF THE SYSTEMS, PROGRAMS AND/OR PROCEDURES SHALL PROVIDE FOR ADEQUATE TRENCH EXCAVATION SAFETY PROTECTION THAT COMPLIES WITH, AS A MINIMUM, OSHA STANDARDS FOR TRENCH EXCAVATIONS. SPECIFICALLY, CONTRACTOR AND/OR CONTRACTOR'S INDEPENDENTLY RETAINED EMPLOYEE OR SAFETY CONSULTANT SHALL IMPLEMENT A TRENCH SAFETY PROGRAM IN ACCORDANCE WITH OSHA STANDARDS GOVERNING THE PRESENCE AND ACTIVITIES OF INDIVIDUALS WORKING IN AND AROUND TRENCH EXCAVATION.

Item #	Description	Units	Est. Qty.
103.1	Remove Concrete Curb	LF	8
103.3	Remove Concrete Sidewalks and Driveways	SF	196
502.1	Concrete Sidewalk	SY	7
503.1	Portland Cement Concrete Driveway	SY	20
507.5	Chain Link Wire Fence (Vehicular Gates - 8-foot width)	EA	2
515.1	Topsoil (4" Depth)	CY	128
516.1	Bermuda Sodding	SY	794
516.2	St. Augustine Sodding	SY	372
530.1	Barricades, Signs, and Traffic Handling (Sites 2 & 3 - Hall Park)	LS	1
550	Trench Excavation Safety Protection	LF	400
848	8" PVC Sanitary Sewer Pipe (SDR 26) (All Depths)	LF	400
852.1	Sanitary Sewer Manhole (4' Dia.) (0'-6' Depth)	EA	2
852.3	Extra Depth Manhole (>6')	VF	0.7
854	6" PVC Sanitary Sewer Lateral Pipe (SDR 26) (All Depths)	LF	50
854	Two-Way Sanitary Sewer Clean-out	EA	7

- ### SHEET NOTES
- PROVIDE TEMPORARY FENCING ACROSS RESIDENTIAL LOT TO ISOLATE WORK AREA (N.S.P.I.).
 - ANY DAMAGE TO ANY IMPROVEMENTS ALONG FAIRDALE DR. OR RESIDENTIAL PROPERTY SHALL BE REPAIRED TO EQUAL OR BETTER CONDITIONS (N.S.P.I.).
 - REMOVE AND REPLACE FENCING FOR ACCESSIBILITY PURPOSES. LIMIT REMOVAL TO EASEMENT LIMITS AND SPECIFIED WORK AREAS (N.S.P.I.).

854-51	Bypass Pumping (Sites 2 & 3 - Hall Park - 8")	LS	1
866	Sewer Main Television Inspection (Pre-Construction) (8" - 15" Dia.)	LF	400
866	Sewer Main Television Inspection (Post-Construction) (8" - 15" Dia.)	LF	400
55 2010	Removal & Replacement of Fences (All Types, Sizes) (Site 2 - Hall Park)	LS	1



LEGEND

ELECTRIC (OVERHEAD)	—OHE—
FENCE (CHAINLINK)	—O—O—
FENCE (WOOD)	—//—//—
FIBER OPTIC	—FO—
FLOW ARROW (EX.)	▶
FLOW ARROW (PR.)	▶
GAS MAIN (BURIED)	—UG—
GAS VALVE	⊙
PARCEL LOT LINE	---
PARCEL R.O.W. LINE	---
PAVEMENT REPLACEMENT	▨
POWER POLE	⊙
POWER POLE GUY WIRE	—
SANITARY SEWER MAIN (EX)	—SS—
EX. SANITARY SEWER MANHOLE	⊙
PR. SANITARY SEWER MANHOLE	⊙
STREET SIGN	⊙
TELEPHONE (BURIED)	—UGT—
TELEPHONE (OVERHEAD)	—OHT—
TELEPHONE MANHOLE	⊙
TELEPHONE PEDESTAL/BOX	⊙
WATER MAIN	—WL—
WATER METER	⊙
WATER VALVE/COVER	⊙

Garcia Infrastructure Consultants, LLC
 Texas Firm No. F-17794
 12042 Blanco Rd., Ste. 203
 San Antonio, Texas 78216
 Ph. (210) 437-0323

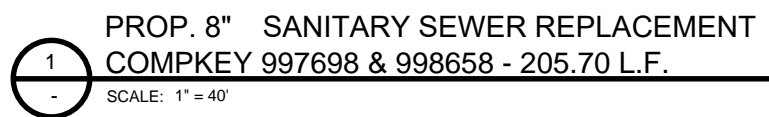
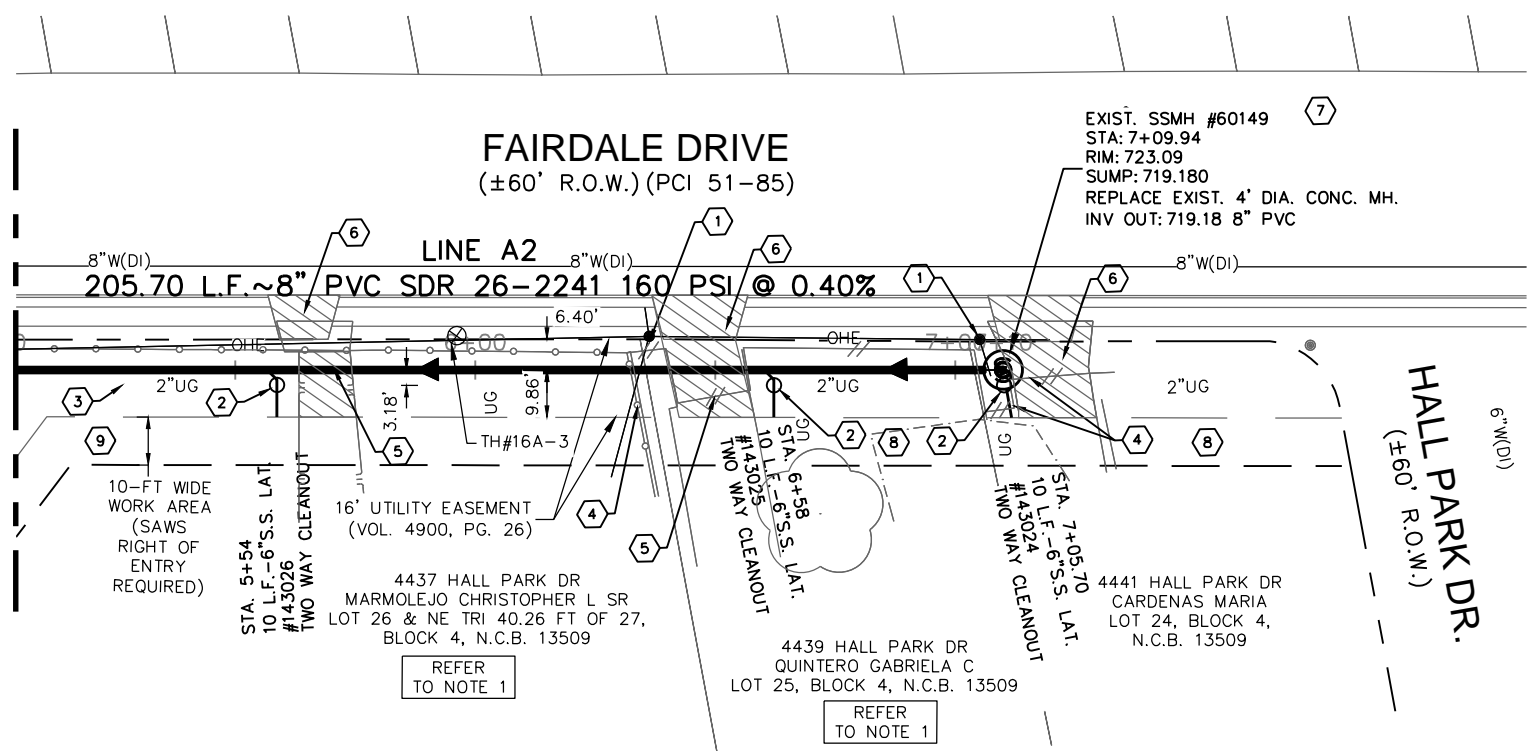
No.	Revision	Drawn	Approved	Date
ADDENDUM 4	EL	JG		10/15/2020

REVISIONS
MULTIPLE SEWERSHED PACKAGE 14
 SITE 2 - COMPKEY 997698 & 998658
 STA. 1+00 TO STA. 5+00
 (1 OF 2)
SANITARY SEWER REPLACEMENT
 DEVELOPER: SAN-ANTONIO-WATER-SYSTEM
 CONT. BUDGET PROJ.

SUBMITTED _____
 APPROVED _____
 MAP No. 000-000
 SECT. No. _____
 DR. JFM CK. JGM JOB No. _____

SHEET 15 OF 48

MATCH LINE STA. 5+00
SEE SHT. 15 OF 48



Item #	Description	Units	Est. Qty.
103.3	Remove Concrete Sidewalks and Driveways	SF	1052
503.1	Portland Cement Concrete Driveway	SY	117
503.4	Asphaltic Concrete Driveway	SY	21
515.1	Topsoil (4" Depth)	CY	67
516.1	Bermuda Sodding	SY	246
516.2	St. Augustine Sodding	SY	361
550	Trench Excavation Safety Protection	LF	210
848	8" PVC Sanitary Sewer Pipe (SDR 26) (All Depths)	LF	210
852.1	Sanitary Sewer Manhole (4' Dia.) (0'-6' Depth)	EA	1
854	6" PVC Sanitary Sewer Lateral Pipe (SDR 26) (All Depths)	LF	30
854	Two-Way Sanitary Sewer Clean-out	EA	3
866	Sewer Main Television Inspection (Pre-Construction) (8" - 15" Dia.)	LF	210
866	Sewer Main Television Inspection (Post-Construction) (8" - 15" Dia.)	LF	210

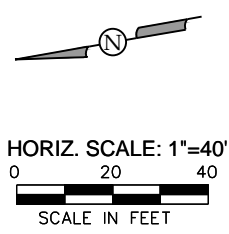
NUMBER	DESCRIPTION	COVER
16A-3	2.5" BLACK STEEL GAS PIPE	3.52'

SHEET NOTES

1. PROVIDE TEMPORARY FENCING ACROSS FAIRDALE DR. OR RESIDENTIAL PROPERTY TO ISOLATE WORK AREA (N.S.P.I.).
2. ANY DAMAGE TO ANY IMPROVEMENTS ALONG FAIRDALE DR. OR RESIDENTIAL PROPERTY SHALL BE REPAIRED TO EQUAL OR BETTER CONDITIONS (N.S.P.I.).
3. CONTRACTOR TO PROVIDE NOTICE TO PROPERTY OWNERS WHEN CONSTRUCTION ALONG DRIVEWAYS WILL REQUIRE PROPERTY OWNERS TO TEMPORARILY RELOCATE VEHICLES.

KEY NOTES

- 1 PROVIDE TEMPORARY BRACING OF UTILITY POLES AS NEEDED DURING INSTALLATION OF SEWER MAIN FOR ALL POLES LESS THAN 5-FT FROM UTILITY TRENCH MEASURED FROM OUTSIDE TRENCH TO OUTSIDE OF POLE (COORDINATE WITH CPS ENERGY) (NSPI)
- 2 WARNING GAS LINE CROSSING AT PROPOSED SEWER MAIN.
- 3 EXISTING 2-INCH GAS MAIN AND SEWER MAIN ARE IN CLOSE PROXIMITY. EXERCISE CAUTION DURING EXCAVATION TO PREVENT DAMAGE TO GAS MAIN.
- 4 REMOVE AND REPLACE FENCE FOR ACCESSIBILITY PURPOSES. LIMIT REMOVAL TO EASEMENT LIMITS AND SPECIFIED WORK AREAS.
- 5 UTILIZE EXISTING GATE FOR INGRESS/EGRESS PURPOSES. CONTRACTOR TO PROVIDE NOTICE TO PROPERTY OWNER REGARDING UTILIZATION OF DRIVEWAY.
- 6 REMOVE AND REPLACE CONCRETE DRIVEWAY AT END OF WORK FOR SITE 2 (WITHIN STREET ROW AND PERMANENT EASEMENT) (48±SY).
- 7 NO FENCING SHALL BE CONSTRUCTED OVER SANITARY SEWER MANHOLE.
- 8 ITEM 516.1 QUANTITY IS BASED ON NEED TO SOD FULL WIDTH OF BOTH THE PERMANENT AND TEMPORARY CONSTRUCTION EASEMENTS FOR THE LENGTH OF THE OPEN CUT
- 9 ITEM 516.2 (ST AUGUSTINE) QUANTITY IS BASED ON NEED TO SOD FULL WIDTH OF BOTH THE PERMANENT AND TEMPORARY CONSTRUCTION EASEMENTS FOR THE LENGTH OF THE OPEN CUT



ELECTRIC (OVERHEAD)	OHE
FENCE (CHAINLINK)	—○—○—
FENCE (WOOD)	—//—//—
FIBER OPTIC	—FO—
FLOW ARROW (EX.)	▷
FLOW ARROW (PR.)	◀
GAS MAIN (BURIED)	—UG—
GAS VALVE	⊙
PARCEL LOT LINE	—
PARCEL R.O.W. LINE	- - -
PAVEMENT REPLACEMENT	▨
POWER POLE	⊙
POWER POLE GUY WIRE	—
SANITARY SEWER MAIN (EX)	—SS—
EX. SANITARY SEWER MANHOLE	⊙
PR. SANITARY SEWER MANHOLE	⊙
STREET SIGN	⊙
TELEPHONE (BURIED)	—UGT—
TELEPHONE (OVERHEAD)	—OHT—
TELEPHONE MANHOLE	⊙
TELEPHONE PEDESTAL/BOX	⊙
WATER MAIN	—WL—
WATER METER	⊙
WATER VALVE/COVER	⊙

Garcia Infrastructure Consultants, LLC
Texas Firm No. F-17794
12042 Blanco Rd., Ste. 203
San Antonio, Texas 78216
Ph. (210) 437-0323

ADDENDUM 4	EL	JG	10/15/2020
No.	Revision	Drawn	Approved
REVISIONS			
MULTIPLE SEWERSHED PACKAGE 14			
SITE 2 - COMPKEY 997698 & 998658			
STA. 5+00 TO STA. 6+98			
(2 OF 2)			
SANITARY SEWER REPLACEMENT			
DEVELOPER: SAN-ANTONIO-WATER-SYSTEM			
CONT. BUDGET PROJ.			
SUBMITTED			
APPROVED			
MAP No. 000-000	SHEET		16
SECT. No.	DR. JFM		OF 48
CK. JGM	JOB No.		

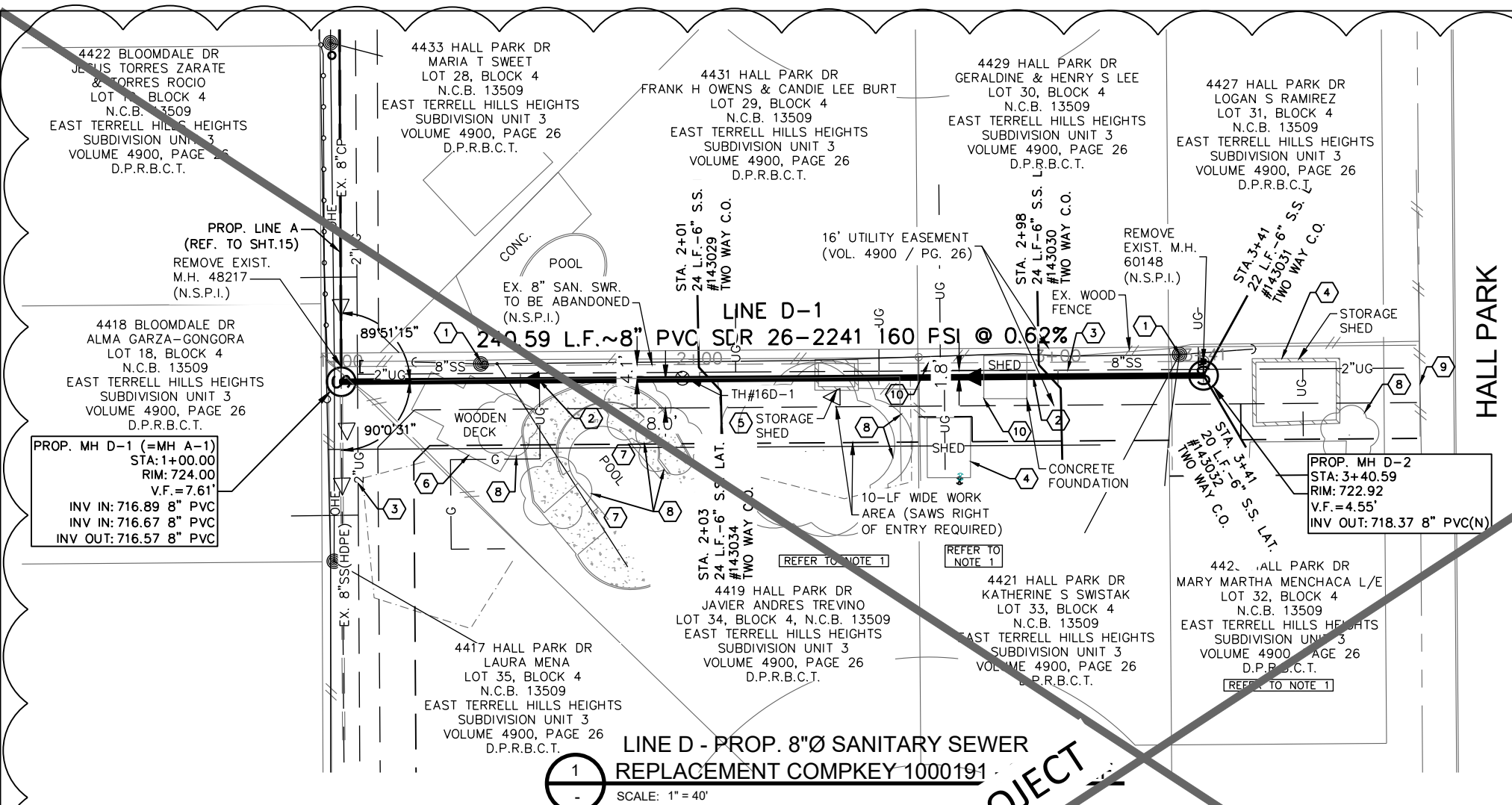


Jain 10/15/20

File: L:\SHARE\1\CADD\SW\1037-SSORP_M-14\Drawings\PKGSZ-OPEN\UT\Site-2 (16a)_Hall_Park-997698-Sheets\S-997698-SWR02.dwg Last Save: 10/15/2020 3:13 PM Last saved by: Elara
 Last plotted by: Elizabeth Lara Plot Style: AECmonochrome.ctb Plot Scale: 1:1 Plot Date: 10/16/2020 2:54 PM Plotter used: DWG To PDF.pc3

TRENCH EXCAVATION SAFETY PROTECTION:
CONTRACTOR AND/OR CONTRACTOR'S INDEPENDENTLY RETAINED EMPLOYEE OR STRUCTURE/DESIGN/GEOTECHNICAL/SAFETY/ EQUIPMENT CONSULTANT, IF ANY, SHALL REVIEW THESE PLANS AND AVAILABLE GEOTECHNICAL INFORMATION AND THE ANTICIPATED INSTALLATION SITE(S) WITHIN THE PROJECT WORK AREA IN ORDER TO IMPLEMENT CONTRACTOR'S TRENCH EXCAVATION SAFETY PROTECTION SYSTEMS, PROGRAMS AND/OR PROCEDURES. THE CONTRACTOR'S IMPLEMENTATION OF THE SYSTEMS, PROGRAMS AND/OR PROCEDURES SHALL PROVIDE FOR ADEQUATE TRENCH EXCAVATION SAFETY PROTECTION THAT COMPLIES WITH, AS A MINIMUM, OSHA STANDARDS FOR TRENCH EXCAVATIONS. SPECIFICALLY, CONTRACTOR AND/OR CONTRACTOR'S INDEPENDENTLY RETAINED EMPLOYEE OR SAFETY CONSULTANT SHALL IMPLEMENT A TRENCH SAFETY PROGRAM IN ACCORDANCE WITH OSHA STANDARDS GOVERNING THE PRESENCE AND ACTIVITIES OF INDIVIDUALS WORKING IN AND AROUND TRENCH EXCAVATION.

File: L:\SHARE1\CADD\SAWS\1037-SSORP_M-14\Drawings\PKG2-OPENUT\Site-4 (16d). Hall Park-997698\Sheets\SS-997698-SWR01.dwg Last Save: 10/16/2020 2:55 PM Last saved by: Elara
 Last plotted by: Elizabeth Lara Plot Style: AECmonochrome.ctb Plot Scale: 1:1 Plot Date: 10/16/2020 2:56 PM Plotter used: DWG To PDF.pc3

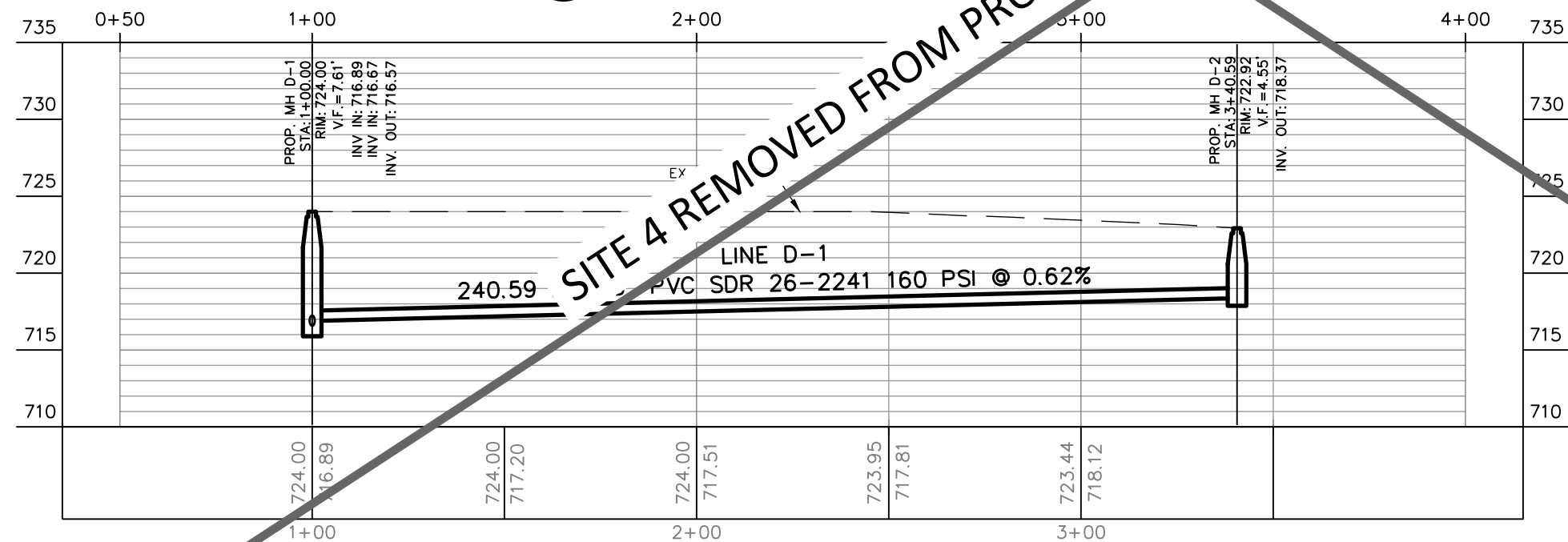


NOTES

1. PROVIDE TEMPORARY FENCING ACROSS RESIDENTIAL LOT TO ISOLATE WORK AREA (N.S.P.I.).
 2. ANY DAMAGE TO ANY IMPROVEMENTS WITHIN RESIDENTIAL PROPERTY SHALL BE REPAIRED TO EQUAL OR BETTER CONDITIONS (N.S.P.I.).
- KEY NOTES**
- ① PROVIDE TEMPORARY BRACING OF UTILITY POLES AS NEEDED DURING INSTALLATION OF SEWER MAIN FOR ALL POLES LESS THAN 5-FT FROM UTILITY TRENCH MEASURED FROM OUTSIDE TRENCH TO OUTSIDE OF POLE (COORDINATE WITH CPS ENERGY) (NSPI)
 - ② WARNING GAS LINE CROSSING AT PROPOSED SEWER MAIN LATERAL
 - ③ EXISTING 2-INCH GAS MAIN AND SEWER MAIN ARE IN CLOSE PROXIMITY. EXERCISE CAUTION DURING EXCAVATION TO PREVENT DAMAGE TO GAS MAIN.
 - ④ PROTECT EXISTING SHED (NSPI)
 - ⑤ MOVE EXISTING 12-FT X 8-FT STORAGE SHED TO ALLOW ACCESS TO SEWER MAIN. REFER TO SPECIAL CONDITIONS AND SPECIFICATIONS SECTION 02050.
 - ⑥ EXISTING WOODEN DECK SHALL BE CUT AT EASEMENT LINE TO ALLOW ACCESS TO SEWER MAIN. DECK WILL BE REPAIRED ALONG PERIMETER OF EASEMENT. REFER TO SPECIAL CONDITIONS AND SPECIFICATION SECTION 02050.
 - ⑦ EXISTING POOL HEADER CURB AND CONCRETE AREA SHALL BE CUT AT EASEMENT LINE TO ALLOW ACCESS TO SEWER MAIN. THEN RECONSTRUCT. IT SHOULD BE RESTORED TO EXISTING CONDITION AS DOCUMENTED IN PRE-CONSTRUCTION VIDEO. (N.S.P.I.)
 - ⑧ PROTECT EXISTING TREES (N.S.P.I.)
 - ⑨ ACCESS TO PROP. M.H. D-2 SHALL BE FROM HALL PARK THROUGH THE 16' UTILITY EASEMENT EAST TERRELL HILLS HEIGHTS SUBDIVISION, UNIT 3 RECORDED IN VOL. 4900, PG. 26, D.P.R.B.C.T. COORDINATE WOOD FENCE/GATE REMOVAL WITH SAWS INSPECTOR AND HOME OWNER PRIOR TO COMMENCING CONSTRUCTION.
 - ⑩ EXISTING STRUCTURE ON CONCRETE SLAB TO BE REMOVED BY OTHERS PRIOR TO START OF SEWER CONSTRUCTION. THE EXISTING CONCRETE SLAB WILL BE REMOVED AS NEEDED TO FACILITATE CONSTRUCTION OF SEWER LINE. THE CONTRACTOR SHALL COORDINATE WITH SAWS INSPECTOR TO DETERMINE THE CONCRETE SLAB AREA TO BE REMOVED. CONTRACTOR SHALL PROVIDE A SMOOTH CLEAN VERTICAL SAW-CUT LINE PERPENDICULAR TO THE PROPOSED SEWER MAIN AS REQUIRED AND GRADE AND HYDROMULCH SLAB AREA TO MATCH EXISTING. REFER TO SPECIAL CONDITIONS AND SPECIFICATION SECTION 2051.
 - ⑪ ITEM 516.1 QUANTITY IS BASED ON NEED TO SOD FILL WIDTH OF BOTH THE PERMANENT AND TEMPORARY CONSTRUCTION EASEMENTS FOR THE LENGTH OF THE OPEN CUT.

LEGEND

ELECTRIC (OVERHEAD)	—OHE—
FENCE (CHAINLINK)	—O—O—
FENCE (WOOD)	—//—//—
FIBER OPTIC	—FO—
FLOW ARROW (EX.)	▶
FLOW ARROW (PR.)	▶
GAS MAIN (BURIED)	—UG—
GAS VALVE	⊙
PARCEL LOT LINE	---
PARCEL R.O.W. LINE	---
PAVEMENT REPLACEMENT	▨
POWER POLE	⊙
POWER POLE GUY WIRE	—
SANITARY SEWER MAIN (EX)	—SS—
EX. SANITARY SEWER MANHOLE	⊙
PR. SANITARY SEWER MANHOLE	⊙
STREET SIGN	⊙
TELEPHONE (BURIED)	—UGT—
TELEPHONE (OVERHEAD)	—OHT—
TELEPHONE MANHOLE	⊙
TELEPHONE PEDESTAL/BOX	⊙
WATER MAIN	—WL—
WATER METER	⊙
WATER VALVE/COVER	⊙



TEST HOLE TABLE

NUMBER	DESCRIPTION	COVER
16D-1	2.5" BLACK STEEL GAS PIPE	3.80'

Item #	Description	Units	Est. Qty.	854	Two-Way Sanitary Sewer Clean-out	EA	6
515.1	Topssoil (4" Depth)	CY	82	866	Sewer Main Television Inspection (Pre-Construction) (8" - 15" Dia.)	LF	241
516.1	Bermuda Sodding	SY	747	866	Sewer Main Television Inspection (Post-Construction) (8" - 15" Dia.)	LF	241
550	Trench Excavation Safety Protection	LF	241	2050	Structure (Shed) Relocation and Deck Adjustment (Site 4 - 4419 Hall Park)	LS	1
848	8" PVC Sanitary Sewer Pipe (SDR 26) (All Depths)	LF	241	2051	Concrete Foundation Removal (Site 4 - 4421 Hall Park)	SF	60
852.1	Sanitary Sewer Manhole (4' Dia.) (0'-6" Depth)	EA	1	SS 2010	Removal & Replacement of Fences (All Types, Sizes) (Site 4 - Hall Park)	LS	1
854	6" PVC Sanitary Sewer Lateral Pipe (SDR 26) (All Depths)	LF	52				

TRENCH EXCAVATION SAFETY PROTECTION:
 CONTRACTOR AND/OR CONTRACTOR'S INDEPENDENTLY RETAINED EMPLOYEE OR STRUCTURE/DESIGN/GEOTECHNICAL SAFETY/ EQUIPMENT CONSULTANT, IF ANY, SHALL REVIEW THESE PLANS AND AVAILABLE GEOTECHNICAL INFORMATION AND THE ANTICIPATED INSTALLATION SITE(S) WITHIN THE PROJECT WORK AREA IN ORDER TO IMPLEMENT CONTRACTOR'S TRENCH EXCAVATION SAFETY PROTECTION SYSTEMS, PROGRAMS AND/OR PROCEDURES. THE CONTRACTOR'S IMPLEMENTATION OF THE SYSTEMS, PROGRAMS AND/OR PROCEDURES SHALL PROVIDE FOR ADEQUATE TRENCH EXCAVATION SAFETY PROTECTION THAT COMPLIES WITH, AS A MINIMUM, OSHA STANDARDS FOR TRENCH EXCAVATIONS. SPECIFICALLY, CONTRACTOR AND/OR CONTRACTOR'S INDEPENDENTLY RETAINED EMPLOYEE OR SAFETY CONSULTANT SHALL IMPLEMENT A TRENCH SAFETY PROGRAM IN ACCORDANCE WITH OSHA STANDARDS GOVERNING THE PRESENCE AND ACTIVITIES OF INDIVIDUALS WORKING IN AND AROUND TRENCH EXCAVATION.



Javier Garcia
 9/21/20

Garcia Infrastructure Consultants, LLC
 Texas Firm No. F-17794
 12042 Blanco Rd., Ste. 203
 San Antonio, Texas 78216
 Ph. (210) 437-0323

ADDENDUM 4	EL	JG	10/14/2020
No.	Revision	Drawn	Approved

REVISIONS

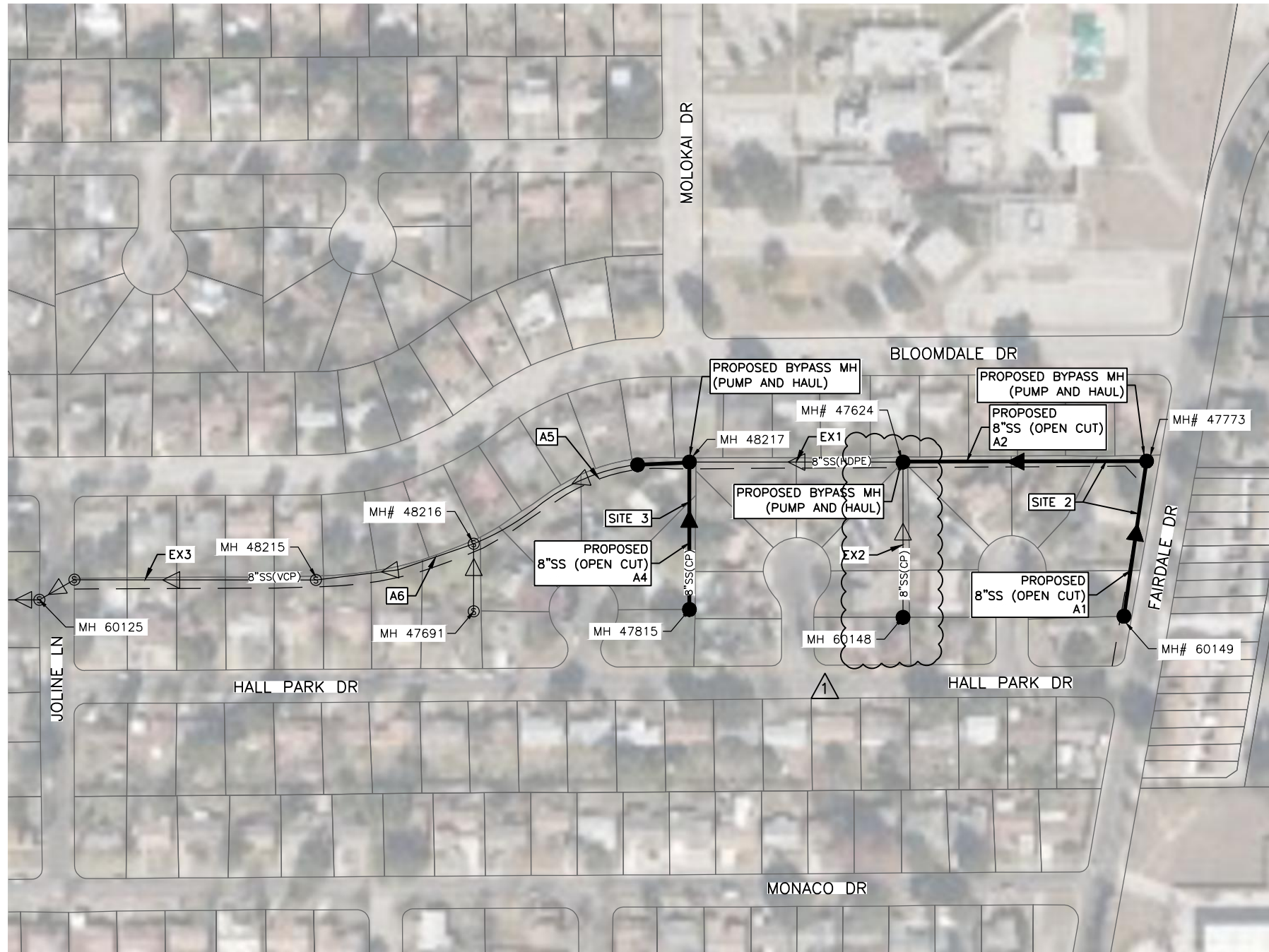
MULTIPLE SEWERSHED PACKAGE 14
 SITE 4 - COMPKY 1000191
 STA. 1+00 TO STA. 3+41
 SANITARY SEWER REPLACEMENT

DEVELOPER: SAN ANTONIO WATER SYSTEM
 CONT. BUDGET PROJ.

SUBMITTED _____
 APPROVED _____

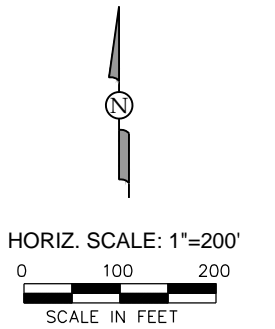
MAP No. 000-000 SHEET 19 OF 19
 SECT. No. _____
 DR. JEM CK. JGM JOB No. _____

File: L:\SHARE\CAD\DWG\SSORP_M-14\Drawings\PKGS-OPEN\SSORP_M-14\Drawings\PKGS-OPEN\CUT\Site-2 (16a).Hall_Park-997698\Sheets\997698-BYPASS01.dwg Last Save: 10/15/2020 11:27 AM Last saved by: Elara
 Last plotted by: Elara Date: 10/15/2020 2:57 PM Plotter used: DWG To PDF.pc3



LEGEND

- SS — EXISTING SANITARY SEWER
- ⊙ EXISTING SS MANHOLE
- ▲— EXISTING SANITARY SEWER FLOW
- ▲— PROPOSED SANITARY SEWER FLOW
- PROPOSED SS MANHOLE
- ▲--- PROPOSED BYPASS NO.1



SANITARY SEWER BYPASS NOTES

1. ALL WORK FOR BYPASS PUMPING SHALL BE DONE IN ACCORDANCE TO SAWS SPECIFICATION NO. 864-S1 BYPASS PUMPING.
2. THE CONTRACTOR SHALL FIELD VERIFY MANHOLE INVERTS AND SANITARY SEWER LINE SLOPES PRIOR TO COMMENCING BYPASS WORK.
3. THE CONTRACTOR SHALL MAINTAIN SEWAGE FLOW IN THE CONSTRUCTION AREA IN ORDER TO PREVENT BACKUP AND/OR OVERFLOW IN TO STREAM PIPE SEGMENTS AND LATERALS, ADJACENT DITCHES, STORM SEWERS AND WATERWAYS.
4. THE CONTRACTOR SHALL PROVIDE AND MAINTAIN ADEQUATE PUMPING EQUIPMENT, FORCE MAINS AND OTHER NECESSARY APPURTENANCES IN ORDER TO MAINTAIN RELIABLE SANITARY SEWER SERVICE IN ALL SANITARY SEWER LINES AS REQUIRED FOR CONSTRUCTION.
5. THE CONTRACTOR SHALL HAVE BACKUP PUMP(S), FORCE MAIN(S) AND APPURTENANCES READY TO DEPLOY IMMEDIATELY.
6. ANY SPILLAGE BACKUPS AND/OR OVERFLOWS, ETC., AS A RESULT OF INADEQUATE EQUIPMENT ARE THE SOLE RESPONSIBILITY OF THE CONTRACTOR.
7. THE CONTRACTOR SHALL DEMONSTRATE THAT THE PUMPING SYSTEM IS IN GOOD WORKING ORDER AND IS SUFFICIENTLY SIZED TO SUCCESSFULLY HANDLE FLOWS BY PERFORMING A TEST RUN FOR A PERIOD OF 2 HOURS PRIOR TO BEGINNING WORK.
8. THE CONTRACTOR SHALL BE REQUIRED TO HAVE ALL MATERIALS, EQUIPMENT AND LABOR NECESSARY TO COMPLETE TO REPAIR OR REPLACEMENT ON THE JOB SITE PRIOR TO ISOLATING THE SEWER MANHOLE OR LINE SEGMENT AND BEGINNING BYPASS PUMPING OPERATIONS.
9. FLOW DATA PROVIDED IS BASED ON PIPE FLOWING FULL AND DOES NOT INCLUDE INFLOW/INFILTRATION. CONTRACTOR SHALL VERIFY FLOW DATA INFORMATION.
10. INFORMATION ON THIS SHEET IS FOR CONTRACTOR'S INFORMATION ONLY. IT IS THE RESPONSIBILITY OF THE CONTRACTOR TO FIELD VERIFY THE INFORMATION.
11. THE CONTRACTOR IS RESPONSIBLE FOR MAINTAINING SEWER SERVICE AT ALL TIMES.



NOTE:
ROADWAY AND DRIVEWAY ACCESS SHALL BE MAINTAINED AT ALL TIMES. CONTRACTOR SHALL UTILIZE TEMPORARY ACCESS RAMP, DETAIL SHEET 6, OR APPROVED EQUAL. CONTRACTOR SHALL PROVIDE LAYOUT PLAN WITH DETAILS TO ENGINEER AT A MINIMUM OF ONE (1) WEEK PRIOR TO SET UP FOR REVIEW AND APPROVAL.

1 SUGGESTED BYPASS PLAN SEGMENT (997698, 998658, 998986)
SCALE: 1" = 200'

Pipe Name	MH (US)	MH (DS)	Pipe Material	Diameter (in)	Slope (%)	Length (ft)	Q(FULL) (GPM)
A1	60149	47773	CP	8	0.4	241	353
A2	47773	47624	CP	8	0.4	365	353
EX1	47624	48217	CP	8	0.4	316	353
EX2	60148	47624	CP	8	0.5	246	394
A4	47815	48217	CP	8	0.4	241	353
A5	48217	48216	CP	8	1.2	187	611
A6	48216	48215	CP	8	1	240	558
EX3	48215	60125	CP	8	2	332	789

SITE 4 REMOVED FROM PROJECT

GIC Garcia Infrastructure Consultants, LLC
 Texas Firm No. F-17794
 12042 Blanco Rd., Ste. 203
 San Antonio, Texas 78216
 Ph. (210) 437-0323

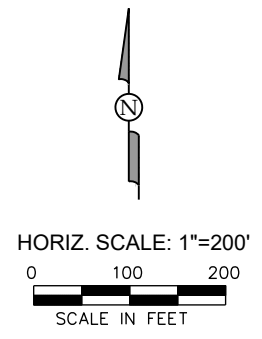
ADDENDUM 4	EL	JG	10/15/2020	
No.	Revision	Drawn	Approved	Date
REVISIONS				
MULTIPLE SEWERSHED PACKAGE 14 SITES 2 & 3 - COMPKEYS 998986, 997698, & 998658 SUGGESTED BYPASS PLAN SANITARY SEWER REPLACEMENT				
DEVELOPER: SAN-ANTONIO-WATER-SYSTEM				
CONT. BUDGET PROJ.				
SUBMITTED _____				
APPROVED _____				
MAP No. 000-000			SHEET 20	
SECT. No. _____			OF 48	
DR. JFM	CK. JGM	JOB No. _____		

File: L:\SHARE\1\CADD\SAWS\1037-SSORP_M-1\Drawings\PKG2-OPEN\UT\Site-3 (16c). Hall_Park-997698\Sheets\997698-TCP01.dwg Last Save: 10/16/2020 9:07 AM Last saved by: Elara
 Last plotted by: Elizabeth Lara Plot Style: AE\Ono.cab Plot Scale: 1:1 Plot Date: 10/16/2020 2:58 PM Plotter used: DWG To PDF.pc3



TCP LEGEND

- CHANNELIZING DEVICE
- ▨ CONSTRUCTION AREA
- RIGHT-OF-WAY
- ➔ TRAFFIC DIRECTION
- ⊕ TRAFFIC SIGN
- ▨▨▨ TY III BARRICADE (8')
- ▨▨▨ TY II BARRICADE (4')
- VERTICAL PANEL



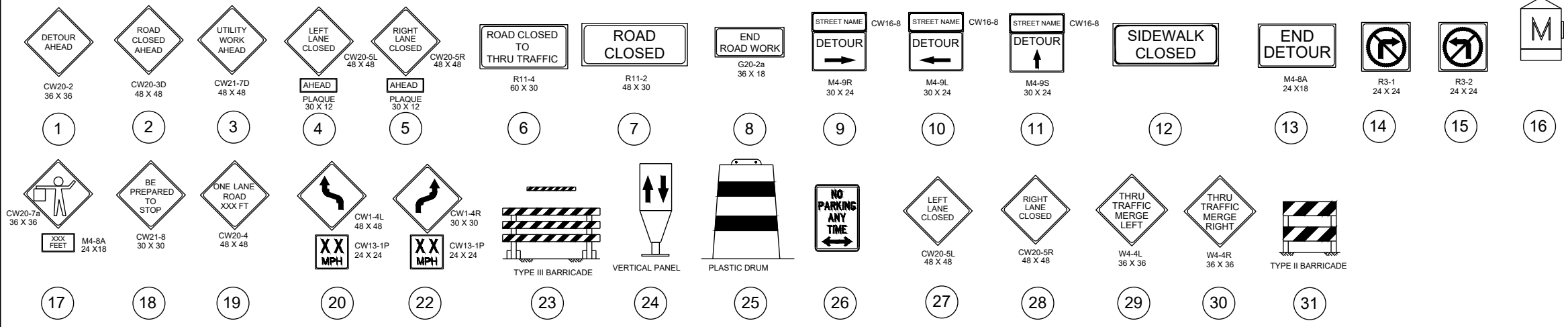
TRAFFIC CONTROL PLAN NOTES:

1. ALL TRAFFIC CONTROL SHALL CONFORM TO THE LATEST VERSION OF THE CITY OF SAN ANTONIO STANDARD DETAILS TRAFFIC CONTROL STANDARDS AND THE TEXAS MANUAL ON UNIFORM TRAFFIC CONTROL DEVICES (TMUTCD), PART VI. FIELD MODIFICATIONS MAY BE MADE TO ADDRESS LOCAL CONDITIONS WITH THE APPROVAL OF THE ENGINEER.
2. WHEN TRAFFIC CONTROL PLAN IS NOT IN EFFECT, REMOVE ALL DEVICES FROM THE TRAVELED LANES AND COVER OR REMOVE ALL WARNING SIGNS.
3. CONTRACTOR IS RESPONSIBLE FOR MAINTAINING ACCESS TO ALL DRIVEWAYS DURING CONSTRUCTION PROVIDING A RIDING SURFACE FOR VEHICLES AND RESIDENTS TO ACCESS EACH PROPERTY. NO SEPARATE PAYMENT SHALL BE MADE FOR MAINTAINING ACCESS TO DRIVEWAYS. ALL DRIVEWAY ACCESS COSTS SHALL BE INCLUDED IN THE VARIOUS ITEMS IN THE PROJECT.
4. CONTRACTOR IS RESPONSIBLE FOR INSTALLATION, MAINTENANCE, AND REMOVAL OF TRAFFIC CONTROL DEVICES. TRAFFIC CONTROL DEVICES SHOULD BE INSPECTED DAILY AND REPAIRED OR REPLACED AS NECESSARY. AFTER REMOVAL, CONTRACTOR IS RESPONSIBLE FOR RESTORATION OF MODIFICATIONS TO ROADWAY AND SIDEWALK SURFACES, ROADWAY MARKINGS, AND SIGNAGE DUE TO TRAFFIC CONTROL DEVICES OR CONSTRUCTION ACTIVITY.
5. POLICE OFFICER IS NOT ANTICIPATED PER TRAFFIC CONTROL PLAN. CONTRACTOR SHALL COORDINATE WITH COSA AND TXDOT IF REQUIRED AND/OR DEVIATING FROM PLANS.
6. CONTRACTOR IS TO FOLLOW THE COSA REQUIREMENT FOR IMPACTED COLLECTOR OR ARTERIAL STREETS, WHICH REQUIRES THE CONTRACTOR TO PROVIDE A SEVEN (7) DAY NOTIFICATION BY ELECTRONIC MESSAGE BOARD BEFORE WORK IS TO OCCUR AND A THREE (3) DAY NOTIFICATION BE MADE BY DOOR HANGER TO IMPACTED RESIDENTS OR BUSINESSES.

SITE 4 REMOVED FROM PROJECT

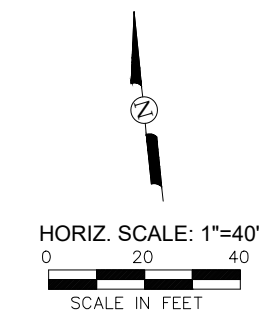
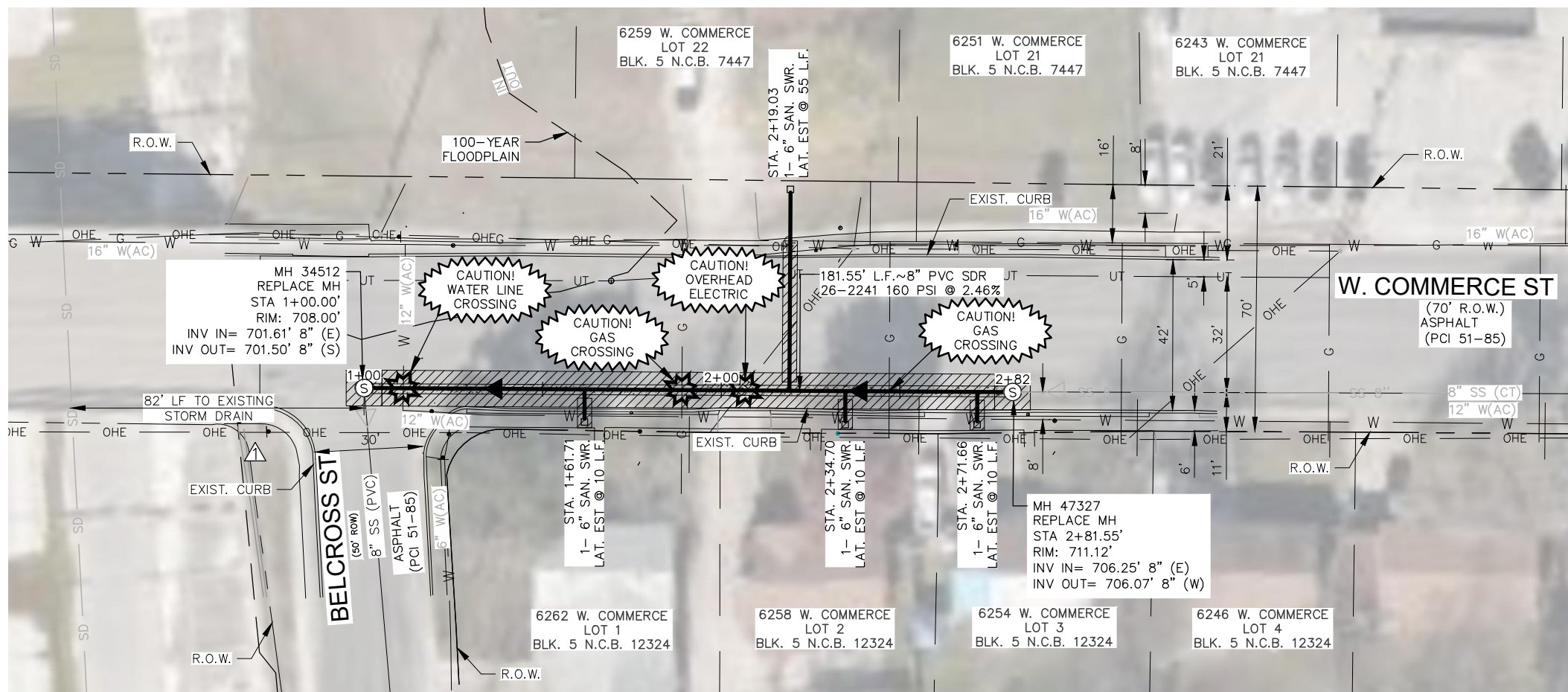


1
TRAFFIC CONTROL PLAN SEGMENT (997698, 1000594)
 SCALE: 1" = 200'



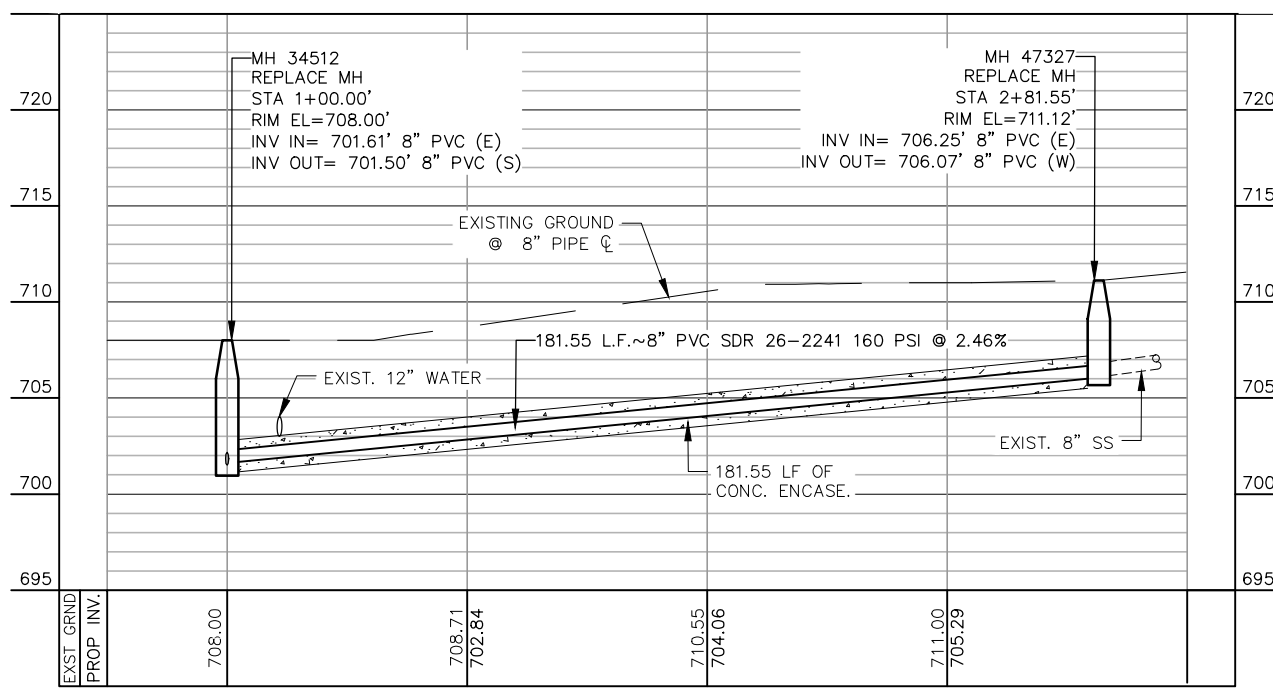
Garcia Infrastructure Consultants, LLC
 Texas Firm No. F-17794
 12042 Blanco Rd., Ste. 203
 San Antonio, Texas 78216
 Ph. (210) 437-0323

ADDENDUM 4	EL	JG	10/15/2020
No.	Revision	Drawn	Approved
REVISIONS			
MULTIPLE SEWERSHED PACKAGE 14 SITES 2, & 3 - COMPKEYS 998986, 997698, & 998658 TRAFFIC CONTROL PLAN SANITARY SEWER REPLACEMENT			
DEVELOPER: SAN-ANTONIO-WATER-SYSTEM CONT. BUDGET PROJ.			
SUBMITTED _____ APPROVED _____			
MAP No. 000-000 SECT. No. _____ DR. JFM CK. JGM JOB No. _____			SHEET 21 OF 48



LEGEND

ELECTRIC (OVERHEAD)	—OHE—
FENCE (CHAINLINK)	—○—○—
FENCE (WOOD)	—//—//—
FIBER OPTIC	—FO—
FLOW ARROW (EX.)	▷
FLOW ARROW (PR.)	◄
GAS MAIN (BURIED)	—UG—
GAS VALVE	⊙
PARCEL LOT LINE	---
PARCEL R.O.W. LINE	---
PAVEMENT REPLACEMENT	▨
POWER POLE	⊙
POWER POLE GUY WIRE	—
SANITARY SEWER MAIN (EX)	—SS—
EX. SANITARY SEWER MANHOLE	⊙
PR. SANITARY SEWER MANHOLE	⊙
STREET SIGN	⊙
TELEPHONE (BURIED)	—UGT—
TELEPHONE (OVERHEAD)	—OHT—
TELEPHONE MANHOLE	⊙
TELEPHONE PEDESTAL/BOX	⊙
WATER MAIN	—WL—
WATER METER	⊙
WATER VALVE/COVER	⊙



ITEM	DESCRIPTION	UNIT	QUANTITY
103.1	REMOVE CONCRETE CURB	LF	18
103	REMOVE CONCRETE SIDEWALK & DRIVEWAY	SF	100
203	TACK COAT	GAL	6
205	HOT MIX ASPHALTIC CONCRETE PAVEMENT (2" TYPE C)	SY	147
206	ASPHALT TREATED BASE (6" COMP. DEPTH)	SY	121
500	CONCRETE CURB	LF	18
502	CONCRETE SIDEWALK	SY	11
530.1	BARRICADES, SIGNS, & TRAFFIC HANDLING	LS	1
550	TRENCH EXCAVATION SAFETY PROTECTION	LF	182
848	8" PVC SANITARY SEWER LINE (SDR-26), (ALL DEPTHS)	LF	182
852.1	SANITARY SEWER MANHOLE (0'-6")	EA	2
852.3	EXTRA DEPTH MANHOLE (>6")	VF	0.50
854	6" PVC SANITARY SEWER LATERAL PIPE (SDR26, 150 PSI) (ALL DEPTHS)	LF	87
854	TWO-WAY SANITARY SEWER CLEANOUT	EA	4
858	CONCRETE ENCASUREMENT, CRADLES, SADDLES, AND COLLARS	CY	17
864-S1	BYPASS PUMPING, SMALL DIAMETER SANITARY SEWER (SITE 5 - COMMERCE)	LS	1
866	PRE-CONSTRUCTION SANITARY SEWER MAIN TELEVISION INSPECTION (8"-15" MAIN)	LF	182
866	POST-CONSTRUCTION SANITARY SEWER MAIN TELEVISION INSPECTION (8"-15" MAIN)	LF	182
6001	PORTABLE CHANGEABLE MESSAGE SIGN (TXDOT SPEC)	EA	2

**LINE A - PROP. 8" Ø SANITARY SEWER
COMPKEY 1015599 - 181.55 L.F.**

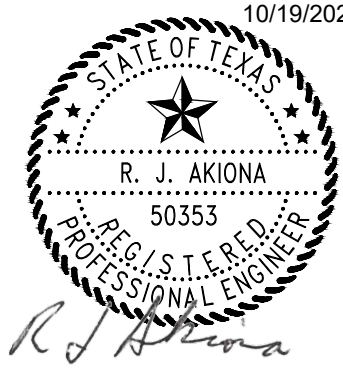
SCALE: 1" = 40' (H), 1" = 10' (V)

- NOTE:
- PROPERTY LINES SHOWN ARE APPROXIMATE.
 - CONTRACTOR TO VERIFY LOCATION AND DEPTH OF ALL UTILITIES PRIOR TO CONSTRUCTION.
 - SANITARY SEWER LATERALS SHALL BE REPLACED IN ACCORDANCE WITH ITEM 854. THE LOCATIONS SHOWN ARE APPROXIMATE AND SHALL BE FIELD VERIFIED BY THE CONTRACTOR PRIOR TO CONSTRUCTION.
 - SITE 5 REQUIRES FLOODPLAIN DEVELOPMENT PERMIT

TRENCH EXCAVATION SAFETY PROTECTION:
CONTRACTOR AND/OR CONTRACTOR'S INDEPENDENTLY RETAINED EMPLOYEE OR STRUCTURE/DESIGN/GEOTECHNICAL/SAFETY/ EQUIPMENT CONSULTANT, IF ANY, SHALL REVIEW THESE PLANS AND AVAILABLE GEOTECHNICAL INFORMATION AND THE ANTICIPATED INSTALLATION SITE(S) WITHIN THE PROJECT WORK AREA IN ORDER TO IMPLEMENT CONTRACTOR'S TRENCH EXCAVATION SAFETY PROTECTION SYSTEMS, PROGRAMS AND/OR PROCEDURES. THE CONTRACTOR'S IMPLEMENTATION OF THE SYSTEMS, PROGRAMS AND/OR PROCEDURES SHALL PROVIDE FOR ADEQUATE TRENCH EXCAVATION SAFETY PROTECTION THAT COMPLIES WITH, AS A MINIMUM, OSHA STANDARDS FOR TRENCH EXCAVATIONS. SPECIFICALLY, CONTRACTOR AND/OR CONTRACTOR'S INDEPENDENTLY RETAINED EMPLOYEE OR SAFETY CONSULTANT SHALL IMPLEMENT A TRENCH SAFETY PROGRAM IN ACCORDANCE WITH OSHA STANDARDS GOVERNING THE PRESENCE AND ACTIVITIES OF INDIVIDUALS WORKING IN AND AROUND TRENCH EXCAVATION.

Garcia Infrastructure Consultants, LLC
Texas Firm No. F-17794
12042 Blanco Rd., Ste. 203
San Antonio, Texas 78216
Ph. (210) 437-0323

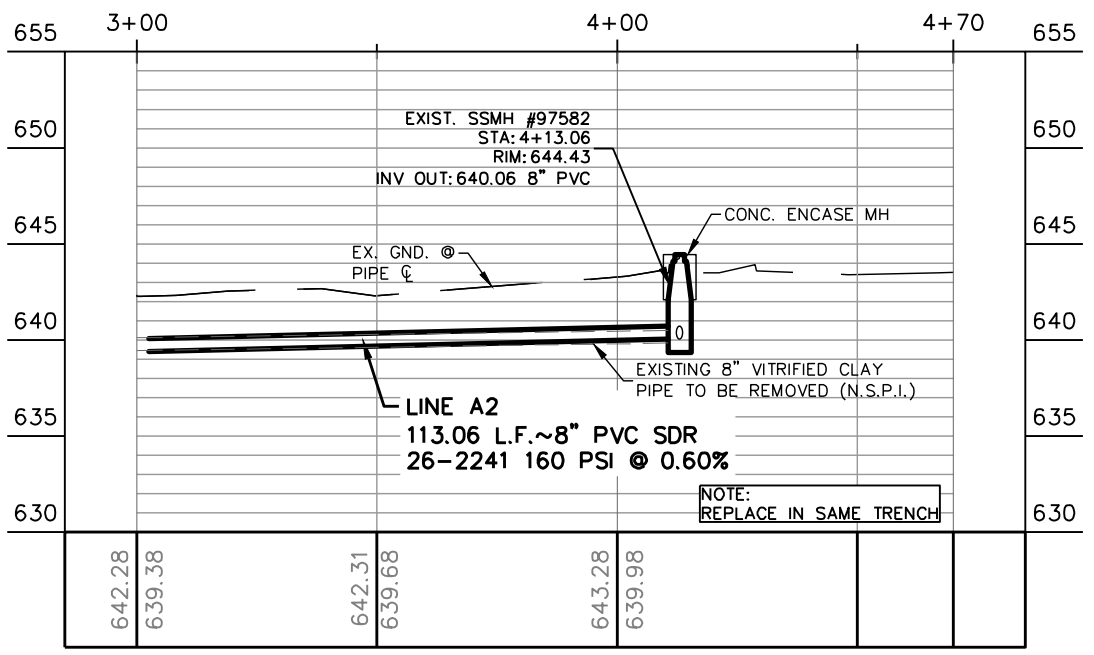
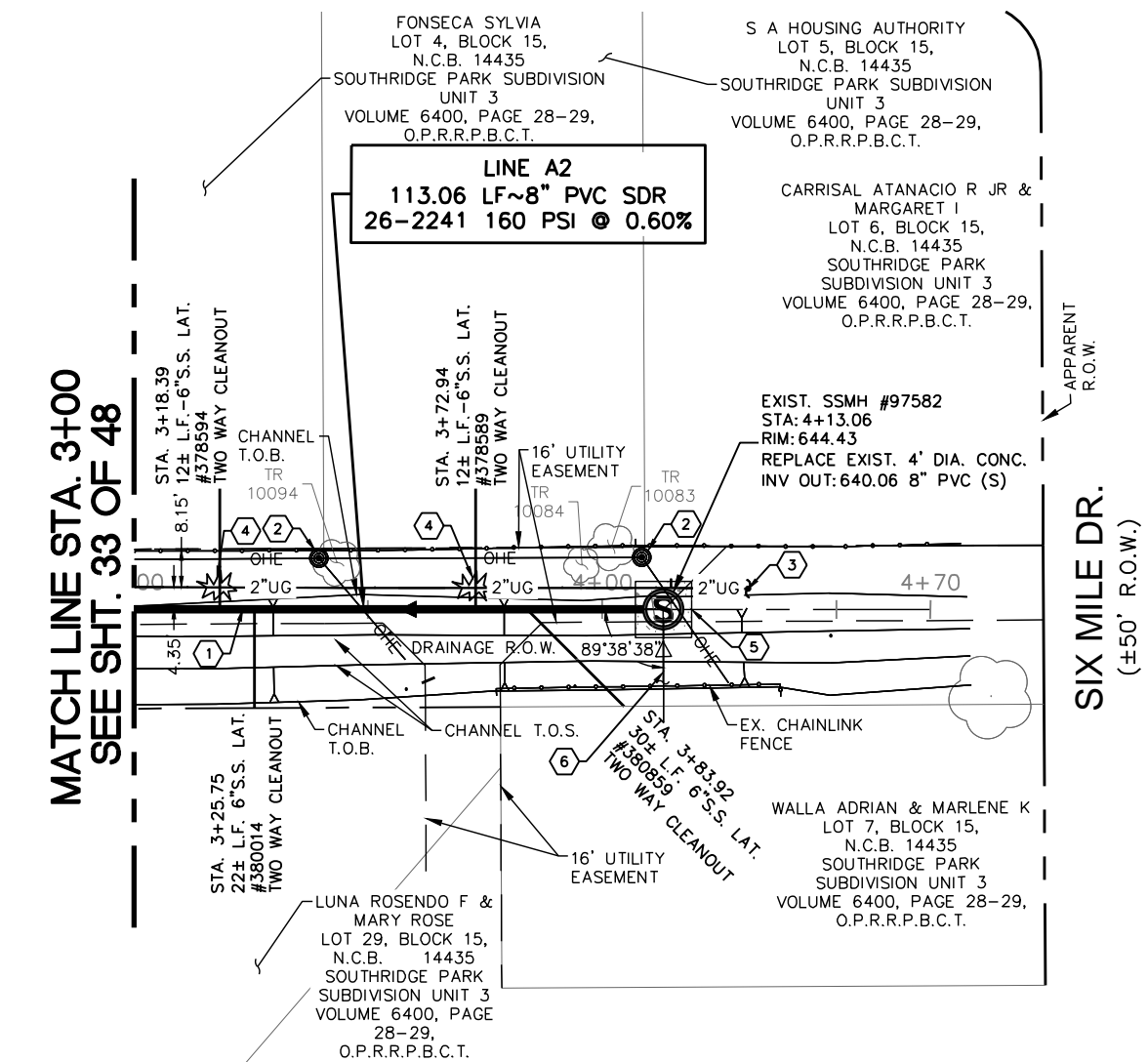
MENDEZ ENGINEERING
Registration # F-14070
12950 Country Parkway STE 120
San Antonio, Texas 78216
Office: 210-802-0808
www.MendezEngineering.com



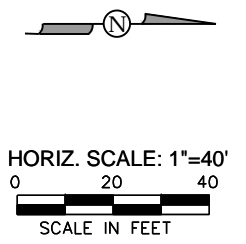
ADDENDUM No. 4		JJC	RA	10/19/20
No.	Revision	Drawn	Approved	Date
REVISIONS				
MULTIPLE SEWERSHED PACKAGE 14				
SITE 5 - COMPEY 1015599 PLAN AND PROFILE SANITARY SEWER REPLACEMENT				
DEVELOPER: SAN-ANTONIO-WATER-SYSTEM		CONT. BUDGET PROJ.		
SUBMITTED _____		APPROVED _____		
MAP No. 000-000	DR. JJC		CK. RA	JOB No.
SECT. No.	SHEET		22	
		OF 40		

File: G:\Projects\2019\1006-5 SAWS - SDC PK 14 - Garcia\Civil\1006-1 SAWS - SDC PK 14 - C1 PLANS.dwg, Last Save: 10/19/2020 11:25 AM, Last saved by: JcaVillio
 Last plotted by: Jose Calvillo Plot Style: AECmono.ctb Plot Scale: 1:1 Plot Date: 10/19/2020 2:28 PM Plotter Used: DWG to PDF.pc3

File: L:\SHARE\1\CADD\SW\1037-SSORP_M-14\Drawings\PKG2-OPENCLUT\Sht-7 (28).dwg; G:\1051654\Sheets\1051654-SWR-02.dwg; Last Save: 10/15/2020 11:46 AM; Last saved by: Elara
 Last plotted by: Elara; Plot Date: 10/16/2020 2:59 PM; Plotter used: DWG To PDF.pc3



Item #	Description	Units	Est. Qty.
515.1	Topsoil (4' Depth)	CY	17.0
516.1	Bermuda Sodding	SY	154.4
520.1	Hydromulching	SY	324.3
550	Trench Excavation Safety Protection	LF	113.06
848	8" PVC Sanitary Sewer Pipe (SDR 26) (All Depths)	LF	113.06
852.1	Sanitary Sewer Manhole (4' Dia.) (0'-6' Depth)	EA	1
854	6" PVC Sanitary Sewer Lateral Pipe (SDR 26) (All Depths)	LF	76
854	Two-Way Sanitary Sewer Clean-out	EA	4
866.1a	Sewer Main Television Inspection (Pre-Construction) (8" - 15" Dia.)	LF	113.06
866.1a	Sewer Main Television Inspection (Post-Construction) (8" - 15" Dia.)	LF	113.06



KEY NOTES

- ① REPLACE EXISTING 8-INCH SANITARY SEWER ALONG SAME ALIGNMENT @ NEW PIPE SLOPE. (N.S.P.I.)
- ② PROVIDE TEMPORARY BRACING OF UTILITY POLES AS NEEDED DURING INSTALLATION OF SEWER MAIN FOR ALL POLES LESS THAN 5-FT FROM UTILITY TRENCH MEASURED FROM OUTSIDE TRENCH TO OUTSIDE OF POLE (COORDINATE WITH CPS ENERGY) (NSPI)
- ③ EXISTING 2-INCH GAS MAIN AND SEWER MAIN ARE IN CLOSE PROXIMITY. EXERCISE CAUTION DURING EXCAVATION TO PREVENT DAMAGE TO GAS MAIN
- ④ WARNING GAS LINE CROSSING AT PROPOSED SEWER MAIN LATERAL
- ⑤ CONCRETE ENCASE NEW MANHOLE 12" FROM RIM PERIMETER PERPENDICULAR TO CHANNEL SLOPE, EXTEND 18" BELOW FINISH GRADE (+/-2.5 CY'S), BROOM FINISH AND CHAMFER ALL EXPOSED EDGES, REGRADE CHANNEL SLOPE TO BETTER THAN EXISTING CONDITIONS (N.S.P.I.)
- ⑥ BASED ON FIELD OBSERVATION POTENTIAL STUB-OUT, CONTRACTOR TO VERIFY IF ACTIVE PRIOR TO COMMENCING CONSTRUCTION.

SHEET NOTES

1. CONTRACTOR SHALL NOT STOCKPILE OR STORE ANY MATERIALS THAT WILL BLOCK OR OTHERWISE SIGNIFICANTLY IMPEDE DRAINAGE FLOW AND POTENTIALLY CAUSE AND ADVERSE IMPACT TO THE ADJACENT RESIDENTIAL PROPERTIES AND/OR STRUCTURES DURING CONSTRUCTION ACTIVITIES
2. CONTRACTOR SHALL PROPERLY COMPACT, REGRADE AND REVEGETATE DISTURBED AREAS CAUSED BY CONSTRUCTION ACTIVITIES WITHIN THE DRAINAGE CHANNEL. (N.S.P.I.)

TREE ID#	DESCRIPTION	TREE PRESERVATION
TR 10083	8" HACK	TREE TO BE PROTECTED
TR 10084	6" CLUSTER	"
TR 10094	8" CLUSTER	"

NOTE: TREE PROTECTION/REMOVAL N.S.P.I.

ELECTRIC (OVERHEAD)	—OHE—
FENCE (CHAINLINK)	—O—O—
FENCE (WOOD)	—//—//—
FIBER OPTIC	—FO—
FLOW ARROW (EX.)	▷
FLOW ARROW (PR.)	▶
GAS MAIN (BURIED)	—UG—
GAS VALVE	⊙
PARCEL LOT LINE	—
PARCEL R.O.W. LINE	- - -
PAVEMENT REPLACEMENT	▨
POWER POLE	⊙
POWER POLE GUY WIRE	—
SANITARY SEWER MAIN (EX)	—SS—
EX. SANITARY SEWER MANHOLE	⊙
PR. SANITARY SEWER MANHOLE	⊙
STREET SIGN	⊙
TELEPHONE (BURIED)	—UGT—
TELEPHONE (OVERHEAD)	—OHT—
TELEPHONE MANHOLE	⊙
TELEPHONE PEDESTAL/BOX	⊙
WATER MAIN	—WL—
WATER METER	⊙
WATER VALVE/COVER	⊙

Garcia Infrastructure Consultants, LLC
 Texas Firm No. F-17794
 12042 Blanco Rd., Ste. 203
 San Antonio, Texas 78216
 Ph. (210) 437-0323



10/15/20

TRENCH EXCAVATION SAFETY PROTECTION:
 CONTRACTOR AND/OR CONTRACTOR'S INDEPENDENTLY RETAINED EMPLOYEE OR STRUCTURE/DESIGN/GEOTECHNICAL/SAFETY/ EQUIPMENT CONSULTANT, IF ANY, SHALL REVIEW THESE PLANS AND AVAILABLE GEOTECHNICAL INFORMATION AND THE ANTICIPATED INSTALLATION SITE(S) WITHIN THE PROJECT WORK AREA IN ORDER TO IMPLEMENT CONTRACTOR'S TRENCH EXCAVATION SAFETY PROTECTION SYSTEMS, PROGRAMS AND/OR PROCEDURES. THE CONTRACTOR'S IMPLEMENTATION OF THE SYSTEMS, PROGRAMS AND/OR PROCEDURES SHALL PROVIDE FOR ADEQUATE TRENCH EXCAVATION SAFETY PROTECTION THAT COMPLIES WITH, AS A MINIMUM, OSHA STANDARDS FOR TRENCH EXCAVATIONS. SPECIFICALLY, CONTRACTOR AND/OR CONTRACTOR'S INDEPENDENTLY RETAINED EMPLOYEE OR SAFETY CONSULTANT SHALL IMPLEMENT A TRENCH SAFETY PROGRAM IN ACCORDANCE WITH OSHA STANDARDS GOVERNING THE PRESENCE AND ACTIVITIES OF INDIVIDUALS WORKING IN AND AROUND TRENCH EXCAVATION.

1 LINE A - PROP. 8" SANITARY SEWER REPLACEMENT COMPKEY 1051654 - 113.06' L.F.
 SCALE: 1" = 40' (H), 1" = 10' (V)

ADDENDUM 4	EL	JG	10/15/2020
No.	Revision	Drawn	Approved
REVISIONS			
MULTIPLE SEWERSHED PACKAGE 14 SITE 7 - COMPKEY 1051654 STA. 3+00 TO STA. 4+13.06 (2 OF 2) SANITARY SEWER REPLACEMENT			
DEVELOPER: SAN-ANTONIO-WATER-SYSTEM		CONT. BUDGET PROJ.	
SUBMITTED _____		APPROVED _____	
MAP No. 000-000	SECT. No.		SHEET 34
DR. JFM	CK. JGM	JOB No.	OF 48